

-20°C ÷ +225°C



#### Working pressure

Up to 120°C:

From 1/8" to 2": 16 Bar

From 2-1/2" to 4": 10 Bar

Up to 225°C:

From 1/8" to 3/4": 16 Bar

From 1" to 2": 10 Bar

From 2-1/2" to 4": 6 Bar



- Taper gas BSPT EN10226-1

from R1/8" to R4"

- Parallel gas BSPP EN10226-1

from G1/8" to G4"



Body: Microcast in

stainless steel AISI 316

## FEATURES

Pressure for intermediate temperatures may be determined by interpolation method.

Indicated temperatures are referring to the fluid.

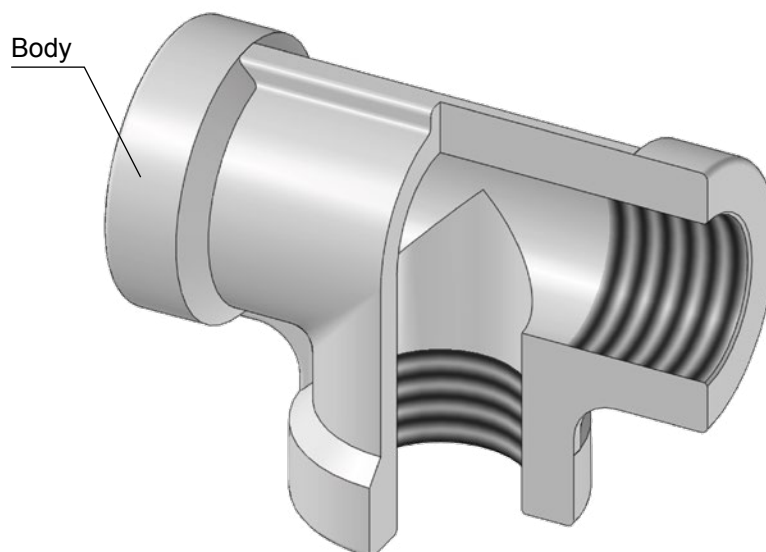


Products in compliance with  
EC Regulation 1907/2006



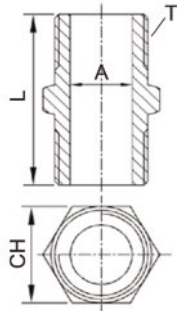
Products in compliance with  
the directive EU 2015/863

## CONSTRUCTION DETAILS



**1410MF**

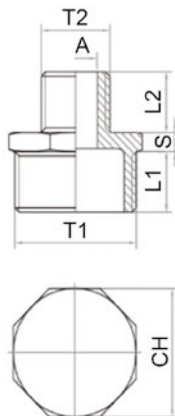
## Nipple connector BSPT thread



| CODE      | T        | A     | L    | CH   |
|-----------|----------|-------|------|------|
| 1410MF18  | R 1/8"   | 5,6   | 23,0 | 12   |
| 1410MF14  | R 1/4"   | 9,0   | 25,0 | 14,5 |
| 1410MF38  | R 3/8"   | 11,2  | 28,5 | 17,5 |
| 1410MF12  | R 1/2"   | 14,7  | 37,0 | 22,6 |
| 1410MF34  | R 3/4"   | 20,0  | 41,0 | 27,7 |
| 1410MF1   | R 1"     | 26,6  | 45,5 | 36   |
| 1410MF114 | R 1-1/4" | 35,0  | 50,0 | 43,5 |
| 1410MF112 | R 1-1/2" | 40,0  | 53,3 | 50   |
| 1410MF2   | R 2"     | 50,0  | 61,0 | 63   |
| 1410MF212 | R 2-1/2" | 64,3  | 72,0 | 77,5 |
| 1410MF3   | R 3"     | 77,3  | 77,0 | 91,5 |
| 1410MF4   | R 4"     | 101,0 | 83,0 | 116  |

**1412MF**

## Reduced nipple connector BSPT thread

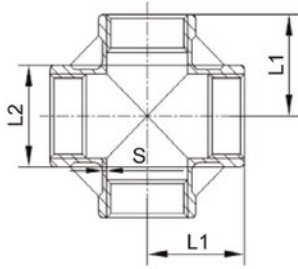


| CODE         | T1       | T2       | A    | L1   | L2   | S    | CH   |
|--------------|----------|----------|------|------|------|------|------|
| 1412MF1418   | R 1/4"   | R 1/8"   | 5,6  | 12,1 | 9,3  | 5,7  | 15   |
| 1412MF3814   | R 3/8"   | R 1/4"   | 9    | 12,0 | 12,0 | 6,0  | 18,5 |
| 1412MF1218   | R 1/2"   | R 1/8"   | 5,6  | 14,5 | 8,8  | 5,5  | 22   |
| 1412MF1214   | R 1/2"   | R 1/4"   | 9    | 14,5 | 11,7 | 5,8  | 22   |
| 1412MF1238   | R 1/2"   | R 3/8"   | 11,2 | 14,6 | 12,3 | 5,5  | 22,5 |
| 1412MF3414   | R 3/4"   | R 1/4"   | 9    | 15,5 | 11,3 | 6,0  | 28   |
| 1412MF3412   | R 3/4"   | R 1/2"   | 14,7 | 17,0 | 14,5 | 6,3  | 28,4 |
| 1412MF112    | R 1"     | R 1/2"   | 14,7 | 19,0 | 15,0 | 6,3  | 34,5 |
| 1412MF134    | R 1"     | R 3/4"   | 20   | 18,3 | 16,6 | 7,0  | 35,2 |
| 1412MF11412  | R 1-1/4" | R 1/2"   | 14,7 | 20,2 | 15,0 | 7,8  | 44,2 |
| 1412MF1141   | R 1-1/4" | R 1"     | 26,6 | 20,5 | 18,3 | 7,8  | 44   |
| 1412MF1121   | R 1-1/2" | R 1"     | 26,6 | 20,8 | 18,6 | 9,9  | 49,9 |
| 1412MF112114 | R 1-1/2" | R 1-1/4" | 35   | 20,8 | 20,3 | 9,9  | 50   |
| 1412MF21     | R 2"     | R 1"     | 26,6 | 26,0 | 18,6 | 9,4  | 62   |
| 1412MF2114   | R 2"     | R 1-1/4" | 35   | 25,3 | 20,7 | 10,3 | 61,9 |
| 1412MF2112   | R 2"     | R 1-1/2" | 40   | 26,0 | 21,5 | 10,3 | 62   |



**1416MF**

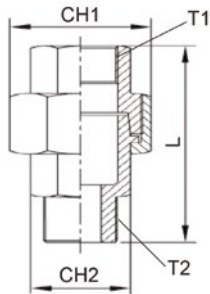
Female cross BSPP thread



| CODE      | T        | L1   | L2   | S   |
|-----------|----------|------|------|-----|
| 1416MF14  | G 1/4"   | 18,0 | 16,5 | 2,3 |
| 1416MF38  | G 3/8"   | 21,0 | 20,0 | 2,2 |
| 1416MF12  | G 1/2"   | 25,0 | 26,0 | 1,7 |
| 1416MF34  | G 3/4"   | 30,0 | 32,0 | 1,8 |
| 1416MF1   | G 1"     | 34,0 | 39,0 | 2,1 |
| 1416MF114 | G 1-1/4" | 40,0 | 47,0 | 2,1 |
| 1416MF112 | G 1-1/2" | 44,0 | 54,5 | 2,1 |
| 1416MF2   | G 2"     | 53,5 | 67,0 | 2,1 |

**1420MF-P3**

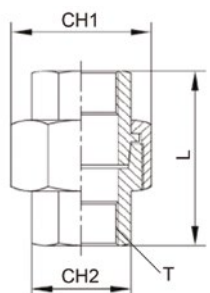
Nipple M/F 3 pieces, male BSPT thread and female BSPP thread



| CODE        | T1       | T2       | L     | CH1  | CH2   |
|-------------|----------|----------|-------|------|-------|
| 1420MF18P3  | G 1/8"   | R 1/8"   | 38,0  | 25   | 13    |
| 1420MF14P3  | G 1/4"   | R 1/4"   | 44,0  | 30,5 | 17    |
| 1420MF38P3  | G 3/8"   | R 3/8"   | 47,5  | 34   | 20,5  |
| 1420MF12P3  | G 1/2"   | R 1/2"   | 47,5  | 34,4 | 23,8  |
| 1420MF34P3  | G 3/4"   | R 3/4"   | 51,7  | 41,2 | 29,2  |
| 1420MF1P3   | G 1"     | R 1"     | 60,0  | 48,3 | 36,5  |
| 1420MF114P3 | G 1-1/4" | R 1-1/4" | 64,0  | 60,3 | 46    |
| 1420MF112P3 | G 1-1/2" | R 1-1/2" | 67,5  | 66,5 | 52    |
| 1420MF2P3   | G 2"     | R 2"     | 75,5  | 79   | 64    |
| 1420MF212P3 | G 2-1/2" | R 2-1/2" | 84,5  | 96,5 | 80    |
| 1420MF3P3   | G 3"     | R 3"     | 96,0  | 110  | 93,5  |
| 1420MF4P3   | G 4"     | R 4"     | 107,5 | 141  | 118,5 |

**1425MF-P3**

Nipple F/F 3 pieces BSPP thread

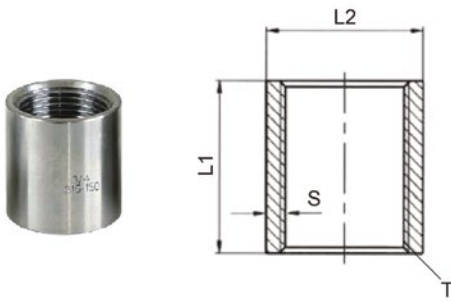


| CODE        | T        | L    | CH1  | CH2   |
|-------------|----------|------|------|-------|
| 1425MF18P3  | G 1/8"   | 30,0 | 25   | 13    |
| 1425MF14P3  | G 1/4"   | 33,5 | 30,5 | 17    |
| 1425MF38P3  | G 3/8"   | 36,5 | 34   | 20,5  |
| 1425MF12P3  | G 1/2"   | 34,7 | 34,4 | 23,8  |
| 1425MF34P3  | G 3/4"   | 37,5 | 41,2 | 29,2  |
| 1425MF1P3   | G 1"     | 43,0 | 48,3 | 36,5  |
| 1425MF114P3 | G 1-1/4" | 45,5 | 60,3 | 46    |
| 1425MF112P3 | G 1-1/2" | 49,0 | 66,5 | 52    |
| 1425MF2P3   | G 2"     | 57,0 | 79   | 64    |
| 1425MF212P3 | G 2-1/2" | 66,0 | 96,5 | 80    |
| 1425MF3P3   | G 3"     | 74,0 | 110  | 93,5  |
| 1425MF4P3   | G 4"     | 82,5 | 141  | 118,5 |



**1425MF**

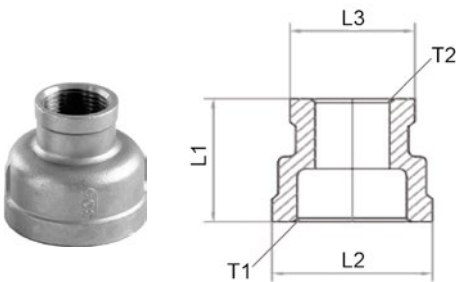
Sleeve F/F BSPP thread



| CODE      | T        | L1   | L2    | S   |
|-----------|----------|------|-------|-----|
| 1425MF18  | G 1/8"   | 18,0 | 14,0  | 2,8 |
| 1425MF14  | G 1/4"   | 24,0 | 18,0  | 3,3 |
| 1425MF38  | G 3/8"   | 29,0 | 20,5  | 2,9 |
| 1425MF12  | G 1/2"   | 32,0 | 24,5  | 3,2 |
| 1425MF34  | G 3/4"   | 34,0 | 30,0  | 3,1 |
| 1425MF1   | G 1"     | 41,0 | 37,0  | 3,5 |
| 1425MF114 | G 1-1/4" | 47,0 | 46,5  | 3,9 |
| 1425MF112 | G 1-1/2" | 47,0 | 51,5  | 3,5 |
| 1425MF2   | G 2"     | 61,0 | 67,0  | 5,3 |
| 1425MF212 | G 2-1/2" | 70,0 | 84,5  | 6,7 |
| 1425MF3   | G 3"     | 75,0 | 96,0  | 6,2 |
| 1425MF4   | G 4"     | 86,0 | 125,0 | 8,2 |

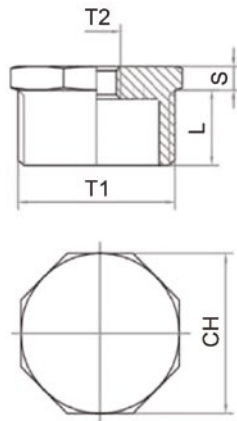
**1426MF**

Reduced sleeve F/F BSPP thread

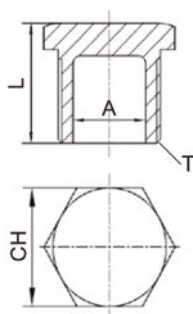


| CODE         | T1       | T2       | L1   | L2   | L3   |
|--------------|----------|----------|------|------|------|
| 1426MF3814   | G 3/8"   | G 1/4"   | 28,1 | 22,0 | 17,5 |
| 1426MF1238   | G 1/2"   | G 3/8"   | 31,7 | 26,1 | 21,0 |
| 1426MF3412   | G 3/4"   | G 1/2"   | 36,6 | 32,1 | 27,0 |
| 1426MF134    | G 1"     | G 3/4"   | 40,0 | 39,5 | 32,0 |
| 1426MF1141   | G 1-1/4" | G 1"     | 43,2 | 48,9 | 39,0 |
| 1426MF112114 | G 1-1/2" | G 1-1/4" | 46,0 | 55,3 | 48,5 |
| 1426MF2112   | G 2"     | G 1-1/2" | 51,5 | 69,0 | 55,5 |



**1440MF****M/F reducer, male BSPT thread & female BSPP thread**

| CODE         | T1       | T2       | L    | S    | CH    |
|--------------|----------|----------|------|------|-------|
| 1440MF1418   | R 1/4"   | G 1/8"   | 11,0 | 4,0  | 15    |
| 1440MF3818   | R 3/8"   | G 1/8"   | 11,5 | 3,5  | 17,5  |
| 1440MF3814   | R 3/8"   | G 1/4"   | 12,7 | 5,0  | 18,5  |
| 1440MF1218   | R 1/2"   | G 1/8"   | 15,2 | 4,8  | 22,5  |
| 1440MF1214   | R 1/2"   | G 1/4"   | 15,4 | 4,8  | 22,5  |
| 1440MF1238   | R 1/2"   | G 3/8"   | 15,1 | 4,8  | 22,5  |
| 1440MF3414   | R 3/4"   | G 1/4"   | 16,6 | 5,7  | 28    |
| 1440MF3438   | R 3/4"   | G 3/8"   | 16,7 | 5,8  | 28,3  |
| 1440MF3412   | R 3/4"   | G 1/2"   | 16,9 | 5,6  | 28,5  |
| 1440MF112    | R 1"     | G 1/2"   | 18,9 | 7,0  | 34,8  |
| 1440MF134    | R 1"     | G 3/4"   | 18,8 | 7,2  | 35    |
| 1440MF11412  | R 1-1/4" | G 1/2"   | 20,5 | 8,5  | 44    |
| 1440MF11434  | R 1-1/4" | G 3/4"   | 20,3 | 8,5  | 43,4  |
| 1440MF1141   | R 1-1/4" | G 1"     | 20,6 | 8,4  | 43,9  |
| 1440MF11234  | R 1-1/2" | G 3/4"   | 21,5 | 8,5  | 49    |
| 1440MF1121   | R 1-1/2" | G 1"     | 21,6 | 8,4  | 49    |
| 1440MF112114 | R 1-1/2" | G 1-1/4" | 21,8 | 8,2  | 49    |
| 1440MF21     | R 2"     | G 1"     | 25,6 | 8,4  | 61,8  |
| 1440MF2114   | R 2"     | G 1-1/4" | 25,5 | 8,5  | 62,5  |
| 1440MF2112   | R 2"     | G 1-1/2" | 25,4 | 8,8  | 62,3  |
| 1440MF212112 | R 2-1/2" | G 1-1/2" | 28,1 | 10,7 | 78,3  |
| 1440MF2122   | R 2-1/2" | G 2"     | 28,2 | 10,8 | 78    |
| 1440MF32     | R 3"     | G 2"     | 28,5 | 12,0 | 89,8  |
| 1440MF3212   | R 3"     | G 2-1/2" | 30,2 | 11,8 | 92,5  |
| 1440MF43     | R 4"     | G 3"     | 34,8 | 13,0 | 115,8 |

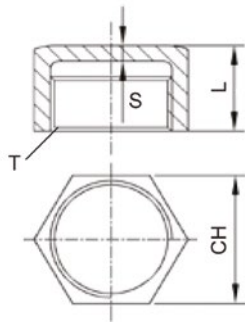
**1450MF****Male plug BSPT thread**

| CODE      | T        | L    | A     | CH   |
|-----------|----------|------|-------|------|
| 1450MF18  | R 1/8"   | 14,0 | 0     | 12   |
| 1450MF14  | R 1/4"   | 17,0 | 0     | 15   |
| 1450MF38  | R 3/8"   | 17,8 | 0     | 18   |
| 1450MF12  | R 1/2"   | 20,9 | 15,0  | 22   |
| 1450MF34  | R 3/4"   | 25,0 | 21,0  | 28   |
| 1450MF1   | R 1"     | 26,7 | 26,0  | 36   |
| 1450MF114 | R 1-1/4" | 30,5 | 35,0  | 43,6 |
| 1450MF112 | R 1-1/2" | 30,6 | 40,3  | 50   |
| 1450MF2   | R 2"     | 34,3 | 51,6  | 62   |
| 1450MF212 | R 2-1/2" | 39,0 | 67,0  | 78   |
| 1450MF3   | R 3"     | 42,0 | 78,5  | 92   |
| 1450MF4   | R 4"     | 47,0 | 103,0 | 116  |



**1455MF**

Female plug BSPP thread

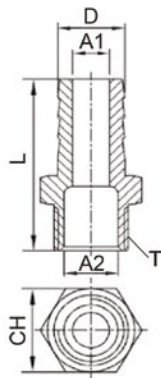


| CODE        | T        | L    | S   | CH   |
|-------------|----------|------|-----|------|
| 1455MF18    | G 1/8"   | 12,5 | 2,4 | 12,5 |
| 1455MF14    | G 1/4"   | 16,0 | 2,6 | 16   |
| 1455MF38    | G 3/8"   | 16,5 | 3,5 | 18,8 |
| 1455MF12    | G 1/2"   | 19,0 | 3,7 | 25   |
| * 1455MF34  | G 3/4"   | 24,0 | 2,5 | 31   |
| * 1455MF1   | G 1"     | 26,0 | 3,2 | 37,5 |
| * 1455MF114 | G 1-1/4" | 29,0 | 3,3 | 47   |
| * 1455MF112 | G 1-1/2" | 25,0 | 3,5 | 53   |
| * 1455MF2   | G 2"     | 29,5 | 3,5 | 64,5 |
| * 1455MF212 | G 2-1/2" | 32,0 | 3,5 | 80,5 |
| * 1455MF3   | G 3"     | 38,5 | 3,5 | 93   |
| * 1455MF4   | G 4"     | 41,0 | 3,8 | 121  |

\* Octagonal wrench

**1469MF**

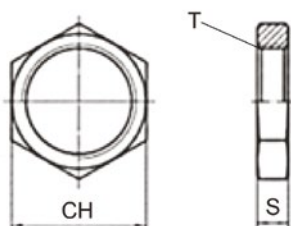
Barb connector BSPT thread



| CODE         | T        | D     | A1   | A2    | L     | CH    |
|--------------|----------|-------|------|-------|-------|-------|
| 1469MF18T7   | R 1/8"   | 7,0   | 4,2  | 4,3   | 41,0  | 11,2  |
| 1469MF14T9   | R 1/4"   | 9,0   | 5,0  | 8,0   | 48,0  | 15    |
| 1469MF38T11  | R 3/8"   | 11,0  | 7,0  | 11,3  | 48,0  | 18,3  |
| 1469MF12T15  | R 1/2"   | 15,0  | 10,0 | 15,4  | 52,6  | 22    |
| 1469MF34T20  | R 3/4"   | 20,0  | 15,1 | 20,0  | 61,0  | 28    |
| 1469MF1T27   | R 1"     | 26,0  | 20,4 | 26,2  | 66,0  | 36    |
| 1469MF114T34 | R 1-1/4" | 34,0  | 27,8 | 35,4  | 66,0  | 43,5  |
| 1469MF112T40 | R 1-1/2" | 40,5  | 33,8 | 40,2  | 68,5  | 50    |
| 1469MF2T52   | R 2"     | 52,5  | 45,7 | 51,5  | 82,0  | 62    |
| 1469MF212T65 | R 2-1/2" | 63,5  | 55,0 | 64,2  | 96,5  | 77,5  |
| 1469MF3T77   | R 3"     | 76,1  | 66,8 | 77,3  | 105,0 | 91,5  |
| 1469MF4T105  | R 4"     | 100,0 | 90,6 | 102,2 | 115,0 | 115,5 |

**1475MF**

Bulkhead locking nut

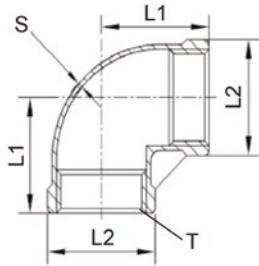


| CODE      | T        | S    | CH   |
|-----------|----------|------|------|
| 1475MF18  | G 1/8"   | 7,0  | 15   |
| 1475MF14  | G 1/4"   | 6,0  | 19,2 |
| 1475MF38  | G 3/8"   | 6,5  | 24   |
| 1475MF12  | G 1/2"   | 8,0  | 26,5 |
| 1475MF34  | G 3/4"   | 10,0 | 32   |
| 1475MF1   | G 1"     | 10,0 | 38,5 |
| 1475MF114 | G 1-1/4" | 11,2 | 48   |
| 1475MF112 | G 1-1/2" | 12,0 | 55   |
| 1475MF2   | G 2"     | 13,3 | 68   |



**1480MF**

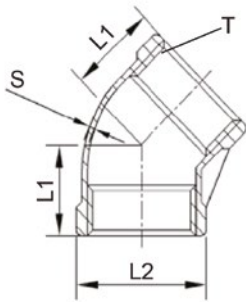
Female elbow 90° BSPP thread



| CODE      | T        | L1   | L2    | S   |
|-----------|----------|------|-------|-----|
| 1480MF18  | G 1/8"   | 16,0 | 14,0  | 1,6 |
| 1480MF14  | G 1/4"   | 18,0 | 16,5  | 1,7 |
| 1480MF38  | G 3/8"   | 21,0 | 20,0  | 1,5 |
| 1480MF12  | G 1/2"   | 25,0 | 26,0  | 1,6 |
| 1480MF34  | G 3/4"   | 30,0 | 32,0  | 1,7 |
| 1480MF1   | G 1"     | 34,0 | 39,2  | 2,1 |
| 1480MF114 | G 1-1/4" | 40,0 | 47,2  | 2,2 |
| 1480MF112 | G 1-1/2" | 43,5 | 54,5  | 2,4 |
| 1480MF2   | G 2"     | 53,5 | 67,0  | 2,7 |
| 1480MF212 | G 2-1/2" | 63,5 | 85,0  | 3,3 |
| 1480MF3   | G 3"     | 74,0 | 97,5  | 2,8 |
| 1480MF4   | G 4"     | 89,0 | 124,5 | 3,8 |

**1482MF**

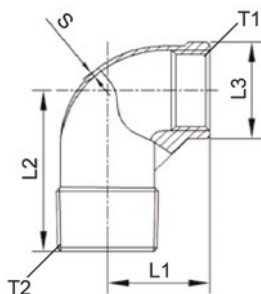
Female elbow 45° BSPP thread



| CODE      | T        | L1   | L2   | S   |
|-----------|----------|------|------|-----|
| 1482MF14  | G 1/4"   | 16,0 | 17,5 | 2,0 |
| 1482MF38  | G 3/8"   | 18,0 | 21,0 | 2,2 |
| 1482MF12  | G 1/2"   | 20,0 | 26,0 | 1,8 |
| 1482MF34  | G 3/4"   | 25,0 | 32,0 | 1,9 |
| 1482MF1   | G 1"     | 27,0 | 39,0 | 2,0 |
| 1482MF114 | G 1-1/4" | 32,0 | 49,0 | 2,3 |
| 1482MF112 | G 1-1/2" | 33,0 | 55,2 | 2,3 |
| 1482MF2   | G 2"     | 40,0 | 68,0 | 2,5 |

**1485MF**

Elbow 90°, male BSPT thread &amp; female BSPP thread

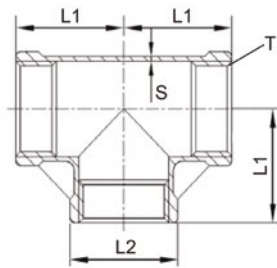


| CODE      | T1       | T2       | L1   | L2    | L3    | S   |
|-----------|----------|----------|------|-------|-------|-----|
| 1485MF18  | G 1/8"   | R 1/8"   | 18,0 | 26,0  | 16,0  | 2,8 |
| 1485MF14  | G 1/4"   | R 1/4"   | 20,0 | 30,0  | 17,0  | 2,0 |
| 1485MF38  | G 3/8"   | R 3/8"   | 21,0 | 31,0  | 20,0  | 2,2 |
| 1485MF12  | G 1/2"   | R 1/2"   | 22,0 | 31,0  | 26,0  | 2,2 |
| 1485MF34  | G 3/4"   | R 3/4"   | 27,0 | 37,0  | 32,0  | 2,1 |
| 1485MF1   | G 1"     | R 1"     | 33,0 | 46,0  | 39,0  | 2,2 |
| 1485MF114 | G 1-1/4" | R 1-1/4" | 38,0 | 52,0  | 47,0  | 2,5 |
| 1485MF112 | G 1-1/2" | R 1-1/2" | 42,0 | 58,0  | 54,5  | 2,6 |
| 1485MF2   | G 2"     | R 2"     | 51,0 | 67,0  | 67,5  | 2,6 |
| 1485MF212 | G 2-1/2" | R 2-1/2" | 64,0 | 81,0  | 84,0  | 3,3 |
| 1485MF3   | G 3"     | R 3"     | 74,0 | 92,0  | 96,8  | 3,0 |
| 1485MF4   | G 4"     | R 4"     | 89,0 | 108,0 | 124,0 | 4,0 |



**1490MF**

Female tee BSPP thread



| CODE      | T        | L1   | L2    | S   |
|-----------|----------|------|-------|-----|
| 1490MF18  | G 1/8"   | 16,0 | 14,0  | 1,9 |
| 1490MF14  | G 1/4"   | 19,0 | 17,0  | 1,5 |
| 1490MF38  | G 3/8"   | 21,0 | 20,0  | 2,3 |
| 1490MF12  | G 1/2"   | 25,0 | 26,0  | 1,8 |
| 1490MF34  | G 3/4"   | 30,0 | 32,0  | 1,9 |
| 1490MF1   | G 1"     | 34,0 | 39,2  | 2,1 |
| 1490MF114 | G 1-1/4" | 40,0 | 42,0  | 2,3 |
| 1490MF112 | G 1-1/2" | 44,0 | 54,0  | 2,4 |
| 1490MF2   | G 2"     | 53,5 | 67,5  | 2,5 |
| 1490MF212 | G 2-1/2" | 64,0 | 84,0  | 3,3 |
| 1490MF3   | G 3"     | 73,0 | 97,0  | 3,3 |
| 1490MF4   | G 4"     | 93,5 | 125,6 | 4,6 |

