



 - 40°C ÷ +140°C
0°C ÷ +140°C swivel fittings

 **Working pressure:**
25 Bar (at 20°C)
16 Bar (at 20°C) swivel fittings

 Compressed air, potable water and fluids suitable with construction materials

 - Taper gas BSPT ISO 7 from R1/8" to R1/2"
- Parallel gas BSPP ISO 228 from G1/8" to G 1/2"

 Polyethylene PE, PTFE, FEP

 **Body:** Stainless steel AISI 316L
Lock nut: Stainless steel AISI 316L
O-ring: FKM (swivel fittings)
FDA compliant

 Food contact materials
EC 1935/2004

 D.M. 174/2004



SILICONE FREE



Products in compliance with
EC Regulation 1907/2006

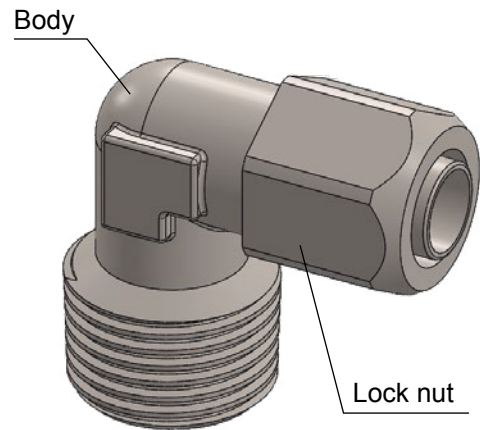


Products in compliance with
the directive EU 2015/863

TOLLERANCES - METRIC TUBE

Ø TUBE (mm)	4	6	8	10	12
TOLLERANCE (mm)	± 0,1	± 0,1	± 0,1	± 0,1	± 0,15

CONSTRUCTION DETAILS



TIGHTENING TORQUE
TAPER GAS BSPT ISO 7

THREAD	1/8"	1/4"	3/8"	1/2"
Nm	6-9	12-15	16-20	18-22

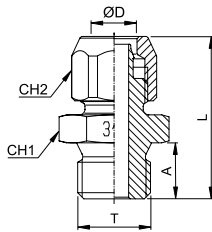
TIGHTENING TORQUE
PARALLEL GAS BSPP ISO 228 & METRIC ISO 262

THREAD	1/8"	1/4"	3/8"	1/2"
Nm	4-6	7-9	8-10	12-15



2700

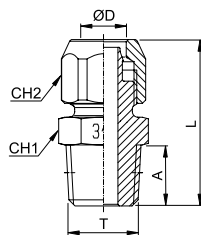
Male connector BSPP thread



CODE	ØD	T	A	L	CH1	CH2	g
2700TR1864	6/4	G 1/8"	8,0	18,5	13	12	15,0
2700TR1464		G 1/4"	10,0	19,0	17	12	24,0
2700TR1886	8/6	G 1/8"	8,0	18,5	13	14	18,0
2700TR1486		G 1/4"	10,0	19,0	17	14	27,0
2700TR18108	10/8	G 1/8"	8,0	20,0	14	17	28,0
2700TR14108		G 1/4"	10,0	20,5	17	17	33,0
2700TR38108		G 3/8"	10,0	20,5	19	17	40,5
2700TR381210	12/10	G 3/8"	10,0	22,0	19	19	44,0
2700TR121210		G 1/2"	12,0	22,5	24	19	47,0

2710

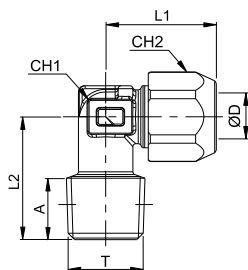
Male connector BSPT thread



CODE	ØD	T	A	L	CH1	CH2	g
2710TR1864	6/4	R 1/8"	7,5	26,0	12	12	19,0
2710TR1464		R 1/4"	11,0	30,0	14	12	22,0
2710TR1886	8/6	R 1/8"	7,5	26,0	12	14	17,0
2710TR1486		R 1/4"	11,0	30,0	14	14	25,0
2710TR18108	10/8	R 1/8"	7,5	27,5	14	17	28,0
2710TR14108		R 1/4"	11,0	31,5	14	17	30,5
2710TR38108		R 3/8"	11,5	32,0	17	17	41,0
2710TR381210	12/10	R 3/8"	11,5	33,5	17	19	44,0
2710TR121210		R 1/2"	14,0	36,5	22	19	44,0

2720

Male elbow BSPT thread

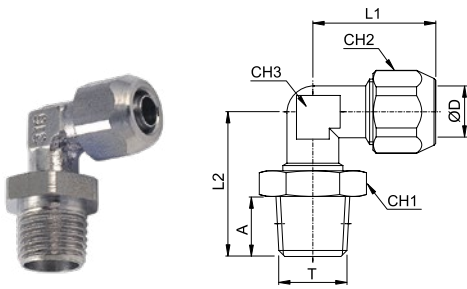


CODE	ØD	T	A	L1	L2	CH1	CH2	g
2720TR1864	6/4	R 1/8"	7,5	17,5	17,0	8	12	15,0
2720TR1464		R 1/4"	10,5	17,5	20,0	9	12	20,0
2720TR1886	8/6	R 1/8"	7,5	18,5	18,0	9	14	19,0
2720TR1486		R 1/4"	10,5	18,5	21,0	10	14	24,0
2720TR3886		R 3/8"	11	26,5	24,5	13	14	41,5
2720TR18108	10/8	R 1/8"	9,0	24,5	18,5	10	17	27,0
2720TR14108		R 1/4"	10,5	24,5	21,0	10	17	30,5
2720TR38108		R 3/8"	11,0	27,0	24,5	13	17	46,0
2720TR381210	12/10	R 3/8"	11,5	29,0	25,0	13	19	48,5
2720TR121210		R 1/2"	14,0	30,5	29,0	17	19	66,0



2725

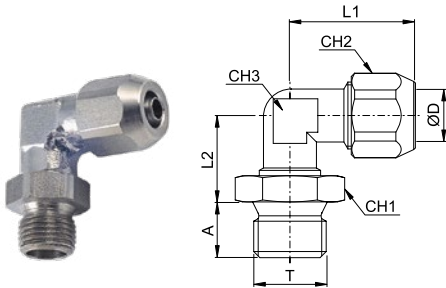
Swivel male elbow BSPT thread



CODE	ØD	T	A	L1	L2	CH1	CH2	CH3	g
2725TR1864	6/4	R 1/8"	7,5	22,5	21,5	13	12	10	24,0
2725TR1464		R 1/4"	11,0	22,5	25,5	17	12	10	28,0
2725TR1886	8/6	R 1/8"	7,5	22,5	21,5	13	14	10	25,0
2725TR1486		R 1/4"	11,0	22,5	25,5	17	14	10	30,0
2725TR14108	10/8	R 1/4"	11,0	24,0	25,5	17	17	10	35,5

2730

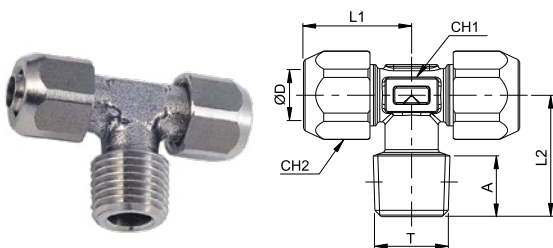
Swivel male elbow BSPP thread



CODE	ØD	T	A	L1	L2	CH1	CH2	CH3	g
2730TR1864	6/4	G 1/8"	8,0	22,5	14,0	13	12	10	25,0
2730TR1464		G 1/4"	10,0	22,5	14,5	17	12	10	28,0
2730TR1886	8/6	G 1/8"	8,0	22,5	14,0	13	14	10	25,5
2730TR1486		G 1/4"	10,0	22,5	14,5	17	14	10	29,5
2730TR14108	10/8	G 1/4"	10,0	24,0	14,5	17	17	10	36,0

2740

Male tee BSPT thread

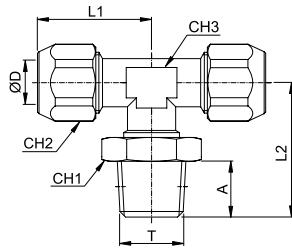


CODE	ØD	T	A	L1	L2	CH1	CH2	g
2740TR1864	6/4	R 1/8"	7,5	17,5	17,0	8	12	24,0
2740TR1464		R 1/4"	10,5	17,5	20,0	9	12	29,0
2740TR1886	8/6	R 1/8"	7,5	18,5	18,0	9	14	30,0
2740TR1486		R 1/4"	10,5	18,5	21,0	10	14	36,0
2740TR18108	10/8	R 1/8"	9,0	25,0	18,5	10	17	47,0
2740TR14108		R 1/4"	10,5	25,0	21,0	10	17	51,0
2740TR38108		R 3/8"	11,5	27,0	25,0	13	17	69,5
2740TR381210	12/10	R 3/8"	11,5	29,0	25,0	13	19	74,0
2740TR121210		R 1/2"	14,0	30,5	29,0	17	19	106,0



2745

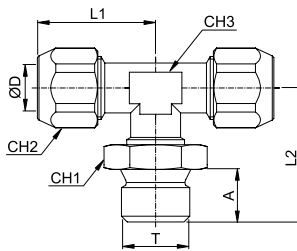
Swivel male tee BSPT thread



CODE	ØD	T	A	L1	L2	CH1	CH2	CH3	g
2745TR1864	6/4	R 1/8"	7,5	22,5	21,5	13	12	10	35,5
2745TR1464		R 1/4"	11,0	22,5	25,5	17	12	10	39,5
2745TR1886	8/6	R 1/8"	7,5	22,5	21,5	13	14	10	37,5
2745TR1486		R 1/4"	11,0	22,5	25,5	17	14	10	42,0
2745TR14108	10/8	R 1/4"	11,0	24,0	25,5	17	17	10	53,0

2750

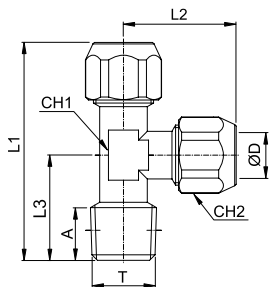
Swivel male tee BSPP thread



CODE	ØD	T	A	L1	L2	CH1	CH2	CH3	g
2750TR1864	6/4	G 1/8"	8,0	22,5	14,0	13	12	10	35,5
2750TR1464		G 1/4"	10,0	22,5	14,5	17	12	10	38,0
2750TR1886	8/6	G 1/8"	8,0	22,5	14,0	13	14	10	37,5
2750TR1486		G 1/4"	10,0	22,5	14,5	17	14	10	41,5
2750TR14108	10/8	G 1/4"	10,0	24,0	14,5	17	17	10	54,0

2760

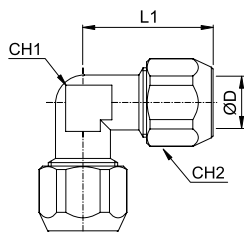
Lateral male tee BSPT thread



CODE	ØD	T	A	L1	L2	L3	CH1	CH2	g
2760TR1864	6/4	R 1/8"	9,0	41,0	22,5	18,5	10	12	30,0
2760TR1464		R 1/4"	10,5	43,5	22,5	21,0	10	12	33,0
2760TR1886	8/6	R 1/8"	9,0	41,0	22,5	18,5	10	14	32,0
2760TR1486		R 1/4"	10,5	43,5	22,5	21,0	10	14	35,0
2760TR18108	10/8	R 1/8"	9,0	43,5	25,0	18,5	10	17	45,0
2760TR14108		R 1/4"	10,5	46,0	25,0	21,0	10	17	55,5
2760TR38108		R 3/8"	11,5	52,0	27,0	25,0	13	17	68,0

2770

Union elbow

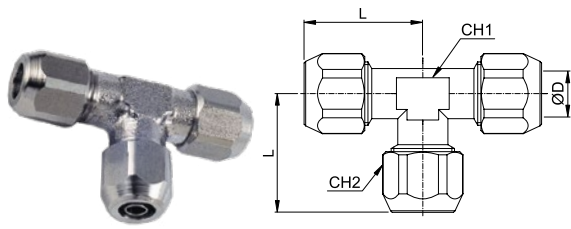


CODE	ØD	L	CH1	CH2	g
2770TR64	6/4	22,5	10	12	26,0
2770TR86	8/6	22,5	10	14	28,0
2770TR108	10/8	25,0	10	17	41,5
2770TR1210	12/10	29,0	13	19	60,0



2780

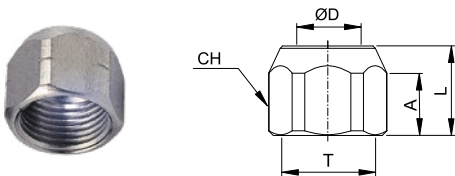
Union tee



CODE	ØD	L	CH1	CH2	g
2780TR64	6/4	22,5	10	12	37,0
2780TR86	8/6	22,5	10	14	39,0
2780TR108	10/8	25,0	10	17	61,0
2780TR1210	12/10	29,0	13	19	115,0

2790

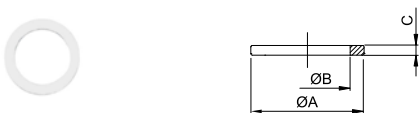
Locking nut



CODE	ØD	T	A	L	CH	g
2790TRM10164	6/4	M10x1	8,0	11,5	12	5,0
2790TRM12186	8/6	M12x1	8,0	11,5	14	6,0
2790TRM141108	10/8	M14x1	9,5	13,5	17	13,0
2790TRM1611210	12/10	M16x1	9,0	14,5	19	15,0

2612

PVC washer



CODE	T	ØA	ØB	C	g
2612TR18	G 1/8"	14,0	10,0	1,5	18,0
2612TR14	G 1/4"	17,5	13,5	1,5	18,0
2612TR38	G 3/8"	21,0	16,7	1,5	18,0
2612TR12	G 1/2"	26,0	21,3	1,5	18,0

The 2612 PVC washer is not certified EC 1935/2004 (Food contact materials) and D.M. 174/2004

