

Dry air: -20°C ÷ 98°C  
Air & Fluids: 1°C ÷ 98°C  
(see the table)



Working pressure:  
20 Bar  
Negative pressure:  
- 0,95 Bar (- 95 kPa)  
Data depend on tube and temperature



Water, beverages, vacuum,  
compressed air, gases  
& liquids suitable with  
construction materials



- Taper gas BSPT ISO 7  
from R1/8" to R1/2"  
- Parallel gas BSPP ISO 228  
from G1/8" to G1/2"



Polyethylene PE, polyamide PA, polyurethane PU, PTFE, FEP  
Tubes made of light metals: Brass, copper and mild steel  
Tubes made of hard materials: See table for use of tubes made of hard materials



Body: POM  
Collet: POM  
Lock claw: Stainless steel AISI 301  
Seal: EPDM suitable for food contact  
O-ring: EPDM suitable for food contact



Food contact materials  
EC 1935/2004



D.M. 174/2004



ICIM certified product  
food contact materials



ICIM certified product  
water contact materials



ACS



NSF51  
NSF61

**W270**

DVGW - W270

**KTW**

KTW guidelines for cold  
water at 23°C



Products in compliance with  
EC Regulation 1907/2006

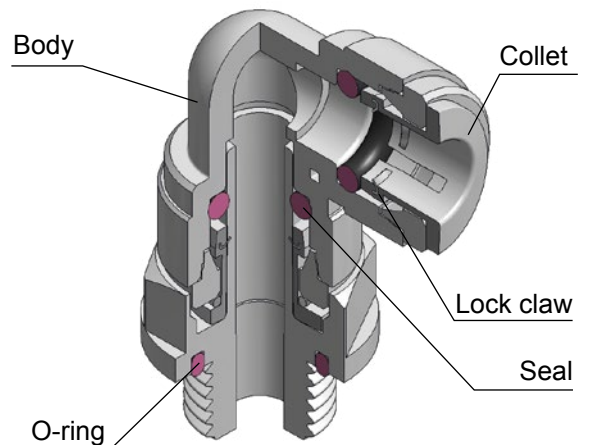


Products in compliance with  
the directive EU 2015/863

**WORKING PRESSURE AND TEMPERATURE**

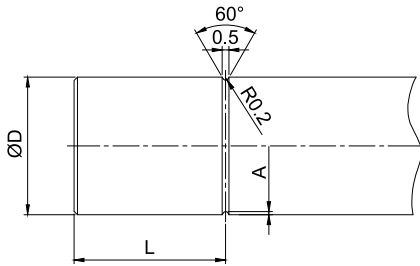
Ø (mm)	-20°C	1°C	25°C	70°C	98°C
4	0-8 Bar only with dry air	20 Bar	20 Bar	16 Bar	10 Bar
6		20 Bar	20 Bar	16 Bar	10 Bar
8		20 Bar	20 Bar	16 Bar	10 Bar
10		16 Bar	16 Bar	14 Bar	10 Bar
12		14 Bar	14 Bar	8 Bar	6 Bar

**CONSTRUCTION DETAILS**



**PIPE GROOVE - HARD MATERIALS TUBE**

When using metallic tubes, please deburr the tubes ends to avoid potential cutting or other damages to the O-ring.



ØD (mm)	L	A
4	7,6	0,23
6	8,0	0,23
8	9,0	0,23
10	11,0	0,23
12	12,7	0,23

**TOLERANCES - METRIC TUBE**

Ø TUBE (mm)	4	6	8	10	12
TOLERANCE (mm)	± 0,08	± 0,08	± 0,08	± 0,08	± 0,10

**INSERTION DEPTH - METRIC TUBE**

Ø TUBE (mm)	4	6	8	10	12
TUBE INSERTION LENGTH (mm)	14,7	16,1	17,5	20,1	24,7

**TIGHTENING TORQUE  
TAPER GAS BSPT ISO 7**

THREAD	1/8"	1/4"	1/8"	1/2"
Nm	1,5	1,5	3,0	3,0

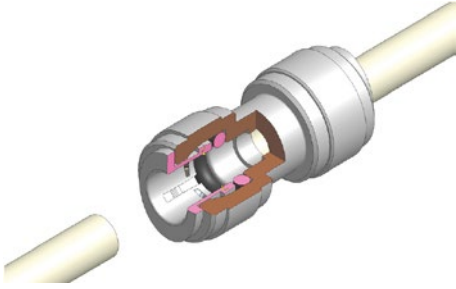
**TIGHTENING TORQUE  
PARALLEL GAS BSPP ISO 228**

THREAD	1/8"	1/4"	3/8"	1/2"
Nm	1,5	1,5	3,0	3,0

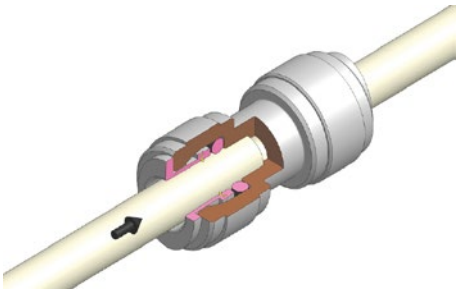


**INSTRUCTIONS FOR CONNECTING AND DISCONNECTING THE TUBE FROM THE FITTING**

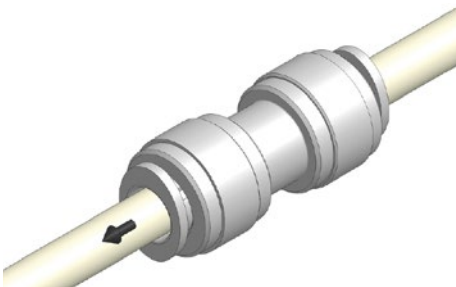
We recommend to read and follow all the instructions, precautions and warnings contained in this catalogue before using the products in pressurized systems. Failure to follow all instructions, precautions and warnings may result in bodily harm or property damages. CDC Fluidtech Europe disclaims any responsibility in case of damages for wrong use of the products.

**CONNECTION OF THE TUBE TO THE FITTING**

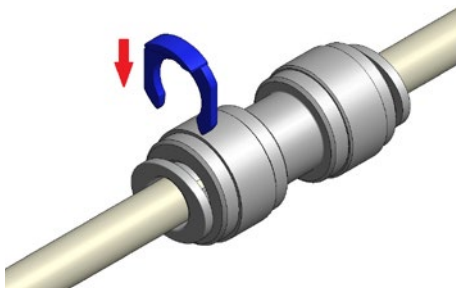
Make sure that the tube size and the push-in system size of the fittings are the same.  
Cut square (90° angle) the part of the tube that has to be inserted into the fittings using the proper tube cutter.  
Make sure that the tube used is clean and does not present any scratch, crack, cut or deformity.  
Before inserting the tube, please remove any possible obstruction inside the fitting.



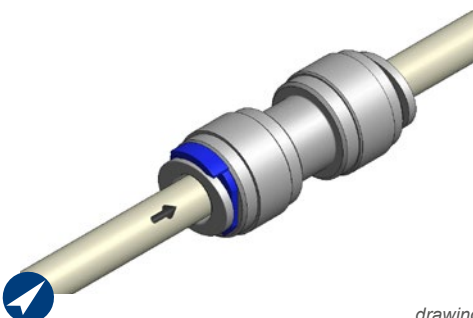
Make sure that the tube is correctly and fully inserted.  
Inserting the tube into the fitting requires a moderate strain. The tube and the fitting should not be scratched or damaged during the insertion, otherwise there may be leaks or further wrong functions.  
Please connect the tube by hands, without using any kind of tool, whether dedicated or not.



To make sure that the fitting is properly connected to the tube, please pull it once without releasing the collet.



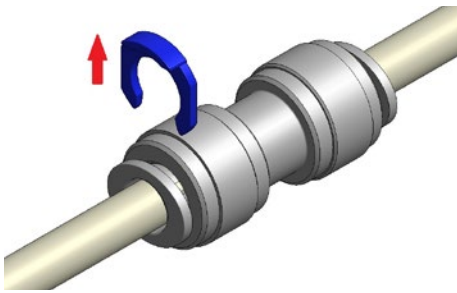
After pulling, insert a locking clip of the right dimension between the fitting body and the collet.



Push once more the tube into the fitting for a complete insertion.  
The use of our locking clips avoids accidental disconnections of the tube and eliminates any play between the tube and the fitting. All the performance limits indicated in this catalogue are related to the systems assembled with locking clips installed.

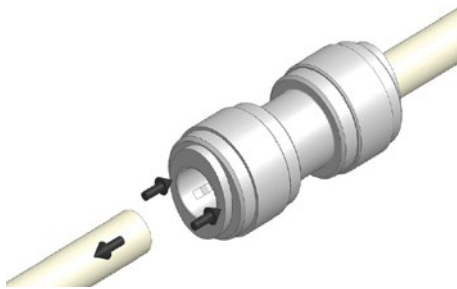
## DISCONNECTION OF THE TUBE TO THE FITTING

---



Make sure that the pressure has been completely eliminated from the system before disassembling the tube.  
In order to disconnect the tube, remove the locking clip first.

---



Push the collet in the direction of the body of the fitting and pull the tube keeping the collet pushed in order to disconnect the tube from the fitting.

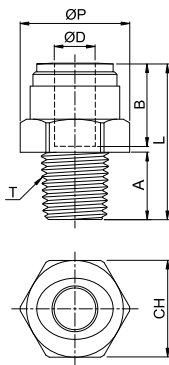
---

Fittings and tubes can be reused providing that they are not ruined and correctly working. It is possible to reuse them only in case of maintenance and only using the same fluid used before. The reuse refers to the push-in system only, being not guaranteed for the threaded part of the fittings. In case of reuse of a tube, the part previously inserted into the fitting has to be cut and the whole tube has to be verified.



**HPC-R**

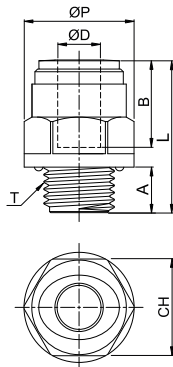
## Male connector BSPT thread



CODE	ØD	T	ØP	A	B	L	CH	g
HPC04R01W	4	R 1/8"	18,5	9,1	14,7	26,0	17	4,1
HPC06R01W	6	R 1/8"	18,5	9,1	16,1	26,2	17	3,9
HPC06R02W		R 1/4"	18,5	13,1	16,1	26,7	17	4,2
HPC06R03W		R 3/8"	21,0	13,5	16,1	26,6	19	5,9
HPC08R01W	8	R 1/8"	21,0	9,1	17,5	28,1	19	5,2
HPC08R02W		R 1/4"	21,0	13,1	17,5	30,6	19	5,8
HPC08R03W		R 3/8"	21,0	13,5	17,5	27,0	19	5,7
HPC10R03W	10	R 3/8"	23,2	13,5	20,1	28,8	21	6,7
HPC10R04W		R 1/2"	24,4	16,3	20,1	32,1	22	9,6
HPC12R03W	12	R 3/8"	26,5	13,5	24,7	32,2	24	8,9
HPC12R04W		R 1/2"	26,5	16,3	24,7	34,3	24	11,0

**HPC-G**

## Male connector BSPP thread

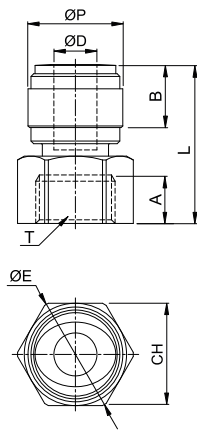


CODE	ØD	T	ØP	A	B	L	CH	g
HPC04G01W	4	G 1/8"	16,6	6,0	14,7	21,9	15	3,3
HPC04G02W		G 1/4"	20,5	8,5	14,7	23,9	18	4,9
HPC06G01W	6	G 1/8"	16,6	6,0	16,1	24,1	15	3,3
HPC06G02W		G 1/4"	20,5	8,5	16,1	24,1	18	4,8
HPC08G01W	8	G 1/8"	18,5	6,0	17,5	27,0	17	5,2
HPC08G02W		G 1/4"	20,5	8,5	17,5	28,5	18	6,1
HPC08G03W		G 3/8"	24,0	9,0	17,5	26,5	21	7,0
HPC08G04W		G 1/2"	28,5	12,5	17,5	29,5	26	11,9
HPC10G02W	10	G 1/4"	21,1	8,5	20,1	30,8	19	7,2
HPC10G03W		G 3/8"	24,2	9,0	20,1	26,3	21	7,0
HPC10G04W		G 1/2"	28,5	12,5	20,1	29,8	26	11,3
HPC12G03W	12	G 3/8"	27,0	9,0	24,7	34,2	24	11,6
HPC12G04W		G 1/2"	28,5	12,5	24,7	32,7	26	12,4



**HCF-G**

Female adapter BSPP thread with internal flat seal

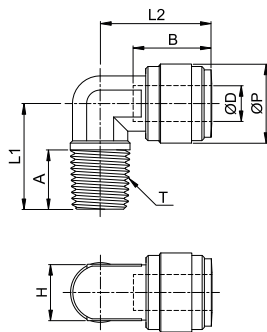


CODE	ØD	T	ØP	A	B	ØE	L	CH	g
HCF04G01W	4	G 1/8"	17,6	6,0	14,7	19,2	26,9	17	6,0
HCF06G01W	6	G 1/8"	17,6	6,0	16,1	19,2	27,1	17	6,1
HCF06G02W		G 1/4"	17,6	8,5	16,1	21,5	29,1	19	7,0
HCF06G03W		G 3/8"	17,6	9,0	16,1	27,3	30,6	24	9,9
HCF08G01W	8	G 1/8"	17,6	6,0	17,5	19,2	27,5	17	6,0
HCF08G02W		G 1/4"	17,6	8,5	17,5	21,5	29,5	19	6,7
HCF08G03W		G 3/8"	17,6	9,0	17,5	27,3	31,0	24	9,7
HCF08G04W		G 1/2"	20,0	12,5	17,5	30,0	38,0	27	13,8
* HCF08G06W		G 3/4"	20,0	10,0	17,5	41,6	36,6	36,7	39,2
HCF10G02W	10	G 1/4"	23,0	8,5	20,1	21,5	34,5	19	10,8
HCF10G03W		G 3/8"	23,0	9,0	20,1	27,3	37,0	24	13,7
HCF10G04W		G 1/2"	20,0	12,5	20,1	30,0	38,3	27	13,3
* HCF10G06W		G 3/4"	20,0	10,0	20,1	41,6	36,9	36,7	38,6
HCF12G02W	12	G 1/4"	23,0	9,0	24,7	27,3	37,7	24	13,0
HCF12G03W		G 3/8"	23,0	9,0	24,7	27,3	37,7	24	13,0
HCF12G04W		G 1/2"	23,0	12,5	24,7	30,0	41,7	27	15,4

\* HCF08G06W & HCF10G06W: brass thread

**HPL-R**

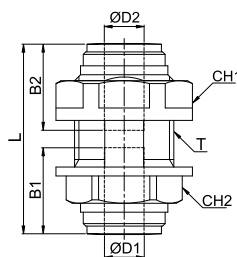
Male elbow BSPT thread



CODE	ØD	T	ØP	A	B	L1	L2	CH	g
HPL04R01W	4	R 1/8"	15,0	9,1	14,7	25,6	25,2	10	4,2
HPL04R02W		R 1/4"	15,0	13,1	14,7	30,6	26,8	10	5,6
HPL06R01W	6	R 1/8"	15,0	9,1	16,1	25,6	25,4	10	4,1
HPL06R02W		R 1/4"	15,0	13,1	16,1	30,6	27,0	10	5,1
HPL06R03W		R 3/8"	17,6	13,5	16,1	32,6	33,1	13	8,4
HPL08R02W	8	R 1/4"	17,6	13,1	17,5	32,2	31,5	13	7,0
HPL08R03W		R 3/8"	17,6	13,5	17,5	32,6	33,5	13	8,0
HPL10R02W	10	R 1/4"	23,6	13,1	20,1	38,3	37,5	17	14,1
HPL10R03W		R 3/8"	20,0	13,5	20,1	35,7	33,9	14	9,2
HPL12R02W	12	R 1/4"	23,6	13,1	24,7	38,3	38,2	17	13,1
HPL12R03W		R 3/8"	23,0	13,5	24,7	38,3	38,4	17,0	13,2
HPL12R04W		R 1/2"	23,0	16,3	24,7	41,4	40,7	17,7	15,6

**HMM**

Bulkhead connector with seal

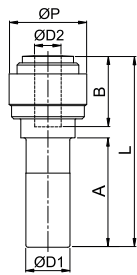


CODE	ØD1	ØD2	T	B1	B2	L	CH1	CH2 (FIXED)	g
HMM0404W	4	4	M15x1,5P	14,7	14,7	32,4	17	18	6,9
HMM0606W	6	6	M17x1,5P	16,1	16,1	35,7	19	21	9,6
HMM0808W	8	8	M20x1,75P	17,5	17,5	38,5	21	25,5	14,0
HMM1010W	10	10	M24x1,75P	20,1	20,1	42,2	24	28,5	19,5
HMM1212W	12	12	M27x2,0P	24,7	24,7	51,4	27	31	28,2
REDUCED BULKHEAD CONNECTOR WITH SEAL									
HMM0604W	6	4	M17x1,5P	16,1	14,7	35,5	19	21	9,8
HMM0806W	8	6	M20x1,75P	17,5	16,1	38,1	21	25,5	14,3



**HGJ**

## Stem reduction



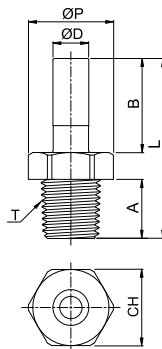
CODE	ØD1	ØD2	ØP	A	B	L	g
HGJ0604W	6	4	13,2	21,0	14,7	36,7	2,4
HGJ0804W	8	4	15,5	22,5	14,7	40,4	3,7
HGJ0806W	8	6	15,5	22,5	16,1	40,6	3,5
HGJ1006W	10	6	17,6	24,8	16,1	43,4	5,2
HGJ1008W	10	8	17,6	24,8	17,5	43,8	5,1
HGJ1208W	12	8	20,0	29,5	17,5	51,3	7,3
HGJ1210W	12	10	20,0	29,5	20,1	51,6	6,9

## STEM ENLARGER

HGJ0405W	4	5	13,8	18,0	15,0	35,0	2,4
HGJ0810W	8	10	20,0	22,5	20,1	44,9	5,4

**HCJ-R**

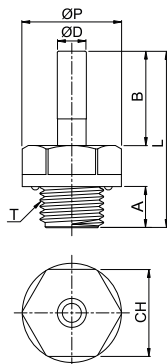
## Stem adapter BSPT thread



CODE	ØD	T	ØP	A	B	L	CH	g
HCJ04R01W	4	R 1/8"	14,4	9,1	18,0	33,1	13	1,8
HCJ04R02W		R 1/4"	18,5	13,1	18,0	37,1	17	3,5
HCJ06R01W	6	R 1/8"	14,4	9,1	19,5	34,6	13	2,0
HCJ06R02W		R 1/4"	18,5	13,1	19,5	38,6	17	3,7
HCJ08R01W	8	R 1/8"	14,4	9,1	21,0	36,1	13	2,2
HCJ08R02W		R 1/4"	18,5	13,1	21,0	40,1	17	3,8
HCJ08R03W		R 3/8"	23,0	13,5	21,0	40,5	21	5,3
HCJ10R02W	10	R 1/4"	18,5	13,1	24,0	43,1	17	4,5
HCJ10R03W		R 3/8"	23,0	13,5	24,0	44,0	21	6,1
HCJ10R04W		R 1/2"	26,5	16,5	24,0	47,0	24	9,7
HCJ12R03W	12	R 3/8"	23,0	13,5	28,0	48,0	21	6,8
HCJ12R04W		R 1/2"	26,5	16,5	28,0	51,0	24	10,2

**HCJ-G**

## Stem adapter BSPP thread

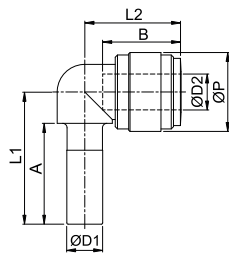


CODE	ØD	T	ØP	A	B	L	CH	g
HCJ04G01W	4	G 1/8"	16,6	6,0	18,0	32,5	15	2,7
HCJ04G02W		G 1/4"	20,5	8,5	18,0	35,0	18	4,2
HCJ06G01W	6	G 1/8"	16,6	6,0	19,5	34,0	15	2,8
HCJ06G02W		G 1/4"	20,5	8,5	19,5	36,5	18	4,3
HCJ08G01W	8	G 1/8"	16,6	6,0	21,0	35,5	15	3,0
HCJ08G02W		G 1/4"	20,5	8,5	21,0	38,0	18	4,6
HCJ08G03W		G 3/8"	24,2	9,0	21,0	38,5	22	6,2
HCJ10G02W	10	G 1/4"	20,5	8,5	24,0	41,0	18	5,2
HCJ10G03W		G 3/8"	24,2	9,0	24,0	41,5	22	6,8
HCJ10G04W		G 1/2"	28,5	12,5	24,0	45,0	26	10,7
HCJ12G03W	12	G 3/8"	24,2	9,0	28,0	45,5	22	7,3
HCJ12G04W		G 1/2"	28,5	12,5	28,0	49,0	26	11,2



**HLJ**

Union elbow tube with stem



CODE	ØD1	ØD2	ØP	A	B	L1	L2	g
HLJ0404W	4	4	13,2	18,0	14,7	30,1	21,9	2,5
HLJ0606W	6	6	15,5	21,0	16,1	34,8	25,1	3,7
HLJ0808W	8	8	17,6	22,5	17,5	38,3	27,7	5,3
HLJ1010W	10	10	20,0	24,8	20,1	43,2	31,3	7,4
HLJ1212W	12	12	23,6	29,5	24,7	51,2	39,0	12,6

REDUCTION UNION ELBOW TUBE WITH STEM

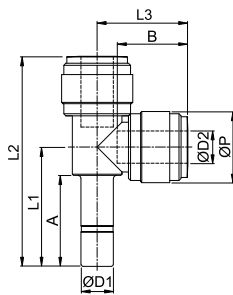
HLJ1006W	10	6	20,0	24,8	16,1	43,2	30,6	7,8
HLJ1008W	10	8	20,0	24,8	17,5	43,2	31,0	8,2

ENLARGER UNION ELBOW TUBE WITH STEM

HLJ0608W	6	8	17,6	21,0	17,5	36,8	26,0	4,7
----------	---	---	------	------	------	------	------	-----

**HSJ**

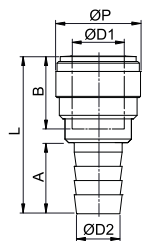
Male lateral tee with stem



CODE	ØD1	ØD2	ØP	A	B	L1	L2	L3	g
HSJ0404W	4	4	13,2	18,0	14,7	23,5	41,2	17,7	4,5
HSJ0606W	6	6	15,0	21,0	16,1	27,0	47,1	20,1	5,9
HSJ0808W	8	8	17,6	22,5	17,5	29,5	52,0	22,5	9,1
HSJ1010W	10	10	20,0	24,8	20,1	33,2	59,3	26,1	12,5
HSJ1212W	12	12	23,0	29,4	24,7	39,4	71,1	31,7	19,6

**HCBB**

Barb connector



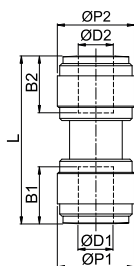
CODE	ØD1	ØD2	BARB	ØP	A	B	L	g
HCBB1210W	12	10	10,0	23,0	20,0	24,7	46,9	8,5





## HUC

## Union connector



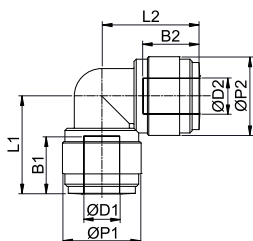
CODE	ØD1	ØD2	ØP1	ØP2	B1	B2	L	g
HUC0404W	4	4	13,2	13,2	14,7	14,7	31,8	3,8
HUC0606W	6	6	15,0	15,0	16,1	16,1	35,2	4,7
HUC0808W	8	8	17,6	17,6	17,5	17,5	38,2	6,9
HUC1010W	10	10	20,0	20,0	20,1	20,1	42,7	9,2
HUC1212W	12	12	23,0	23,0	24,7	24,7	52,4	14,4

## REDUCED UNION CONNECTOR

HUC0604W	6	4	15,0	15,0	16,1	14,7	35,0	5,0
HUC0605W	6	5	15,0	15,0	16,1	14,9	35,1	4,9
HUC0804W	8	4	17,6	17,6	17,5	14,7	36,6	6,5
HUC0806W	8	6	17,6	17,6	17,5	16,1	37,8	7,1
HUC1006W	10	6	20,0	15,5	20,1	16,1	42,0	9,8
HUC1008W	10	8	20,0	20,0	20,1	17,5	42,4	9,6
HUC1208W	12	8	23,6	17,6	24,7	17,5	44,4	11,5
HUC1210W	12	10	23,0	23,0	24,7	20,1	51,7	15,0

## HUL

## Union elbow



CODE	ØD1	ØD2	ØP1	ØP2	B1	B2	L1	L2	g
HUL0404W	4	4	13,2	13,2	14,7	14,7	24,5	24,5	3,9
HUL0606W	6	6	15,0	15,0	16,1	16,1	27,6	27,6	5,1
HUL0808W	8	8	17,6	17,6	17,5	17,5	30,7	30,7	7,6
HUL1010W	10	10	20,0	20,0	20,1	20,1	35,8	35,8	10,2
HUL1212W	12	12	23,0	23,0	24,7	24,7	43,2	43,2	16,4

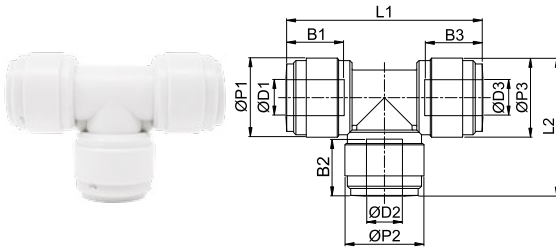
## REDUCED UNION ELBOW

HUL0804W	8	4	17,6	13,2	17,5	14,7	28,3	29,7	5,9
HUL0806W	8	6	17,6	17,6	17,5	16,1	30,7	30,3	7,7
HUL1006W	10	6	23,0	17,6	20,1	16,1	37,8	36,1	12,6
HUL1008W	10	8	20,0	20,0	20,1	17,5	35,8	35,5	10,2
HUL1206W	12	6	23,0	17,6	24,7	16,1	38,5	36,1	12,0
HUL1208W	12	8	23,0	17,6	24,7	17,5	38,5	36,5	11,9
HUL1210W	12	10	23,0	23,0	24,7	20,1	43,2	42,5	17,3



**HUT**

Union tee



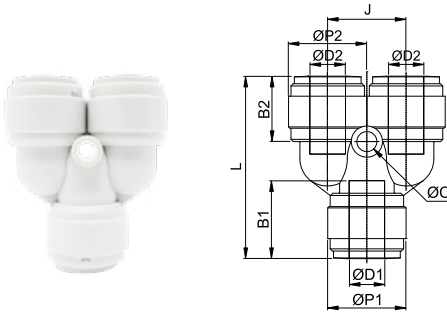
CODE	ØD1	ØD2	ØD3	ØP1	ØP2	ØP3	B1	B2	B3	L1	L2	g
HUT0404W	4	4	4	13,2	13,2	13,2	14,7	14,7	14,7	24,5	35,8	5,8
HUT0606W	6	6	6	15,0	15,0	15,0	16,1	16,1	16,1	27,6	40,2	7,3
HUT0808W	8	8	8	17,6	17,6	17,6	17,5	17,5	17,5	30,7	43,8	10,6
HUT1010W	10	10	10	20,0	20,0	20,0	20,1	20,1	20,1	35,8	51,6	14,6
HUT1212W	12	12	12	23,0	23,0	23,0	24,7	24,7	24,7	43,2	63,4	23,2

REDUCED UNION TEE

HUT100806W	10	8	6	20,0	15,0	20,0	20,1	17,5	16,1	32,1	48,6	15,6
HUT100608W	10	6	8	20,0	15,0	20,0	20,1	16,1	17,5	32,1	48,6	15,6
HUT100610W	10	6	10	20,0	15,0	20,0	20,1	16,1	20,1	32,1	48,7	12,0
HUT121012W	12	10	12	23,0	23,0	23,0	24,7	20,1	24,7	42,5	63,4	24,2

**HUY**

Union Y



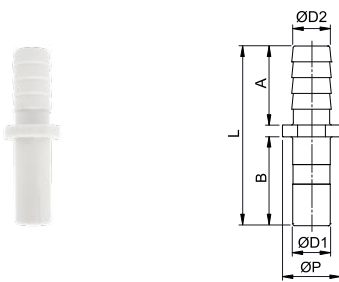
CODE	ØD1	ØD2	ØP1	ØP2	ØC	B1	B2	J	L	g
HUY0404W	4	4	13,8	13,8	3,3	14,7	14,7	13,5	33,7	6,7
HUY0606W	6	6	15,5	15,5	3,3	16,1	16,1	15,5	38,8	9,2
HUY0808W	8	8	17,6	17,6	4,5	17,5	17,5	17,6	41,0	11,6
HUY1010W	10	10	20,0	20,0	4,5	20,1	20,1	20,0	46,2	16,0
HUY1212W	12	12	23,0	23,0	4,5	24,7	24,7	23,0	56,4	26,3

REDUCED UNION Y

HUY1008W	10	8	20,0	20,0	4,5	20,1	17,5	20,0	45,9	16,8
----------	----	---	------	------	-----	------	------	------	------	------

**HCJB**

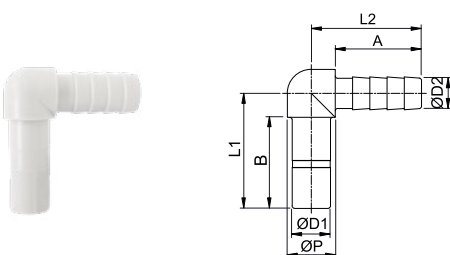
Tube barb connector



CODE	ØD1	ØD2	BARB	ØP	A	B	L	g
HCJB0604W	6	4	4,5	11,4	18,0	17,2	38,2	1,0
HCJB0606W	6	6	6,5	11,4	18,0	17,2	38,2	1,1
HCJB0806W	8	6	6,5	12,2	18,0	19,0	40,0	1,7
HCJB1006W	10	6	6,5	14,7	18,0	22,5	43,5	2,3
HCJB1008W	10	8	8,6	14,7	18,0	22,5	43,5	2,7
HCJB1010W	10	10	10,6	14,7	20,0	22,5	45,5	3,0
HCJB1210W	12	10	10,6	18,5	20,0	27,5	50,5	4,3

**HLJB**

Elbow tube barb connector

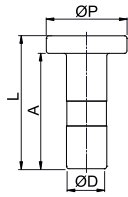


CODE	ØD1	ØD2	BARB	ØP	A	B	L1	L2	g
HLJB1006W	10	6	6,5	12,0	18,0	22,5	28,5	24,0	3,0
HLJB1008W	10	8	8,6	12,0	18,0	22,5	28,5	24,0	3,4



**HPP**

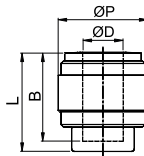
Male plug



CODE	ØD	ØP	A	L	g
HPP04W	4	13	19,0	22,5	0,8
HPP06W	6	13	21,0	24,5	1,1
HPP08W	8	16	23,0	26,5	1,8
HPP10W	10	18	26,0	30,0	2,7
HPP12W	12	21	30,0	34,0	4,0

**HPF**

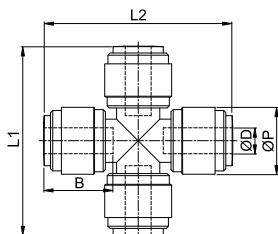
Female plug



CODE	ØD	ØP	B	L	g
HPF06W	6	15,5	16,1	18,9	2,8
HPF08W	8	17,6	17,5	19,5	3,6
HPF10W	10	20,0	20,1	22,1	4,7
HPF12W	12	23,0	24,7	26,7	7,3

**HZA**

Cross junction

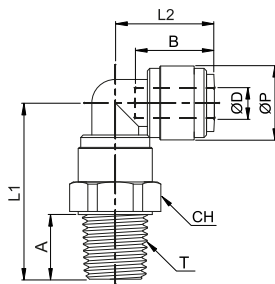


CODE	ØD	ØP	B	L1	L2	g
HZA0606W	6	15,5	16,1	43,8	43,8	9,7
HZA0808W	8	17,6	17,5	47,3	47,3	15,0



**HRPL-R**

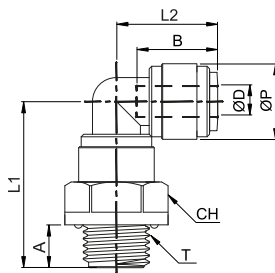
Swivel male elbow BSPT thread



CODE	ØD	T	ØP	A	B	L1	L2	CH	g
HRPL04R01W	4	R 1/8"	13,2	9,1	14,7	29,7	17,9	15	5,9
HRPL04R02W		R 1/4"	13,2	13,1	14,7	33,7	17,9	17	7,3
HRPL06R01W	6	R 1/8"	15,0	9,1	16,1	31,7	20,1	17	7,2
HRPL06R02W		R 1/4"	15,0	13,1	16,1	35,7	20,1	17	8,0
HRPL08R01W	8	R 1/8"	17,6	9,1	17,5	33,4	21,9	19	9,9
HRPL08R02W		R 1/4"	17,6	13,1	17,5	37,4	21,9	19	10,7
HRPL08R03W		R 3/8"	17,6	13,5	17,5	37,8	21,9	19	11,4
HRPL10R02W	10	R 1/4"	20,0	13,1	20,1	41,4	25,8	21	15,1
HRPL10R03W		R 3/8"	20,0	13,5	20,1	41,8	25,8	21	15,2
HRPL10R04W		R 1/2"	20,0	16,5	20,1	44,8	25,8	24	19,5
HRPL12R03W	12	R 3/8"	23,0	13,5	24,7	48,2	31,7	24	23,4
HRPL12R04W		R 1/2"	23,0	16,5	24,7	51,2	31,7	24	25,9

**HRPL-G**

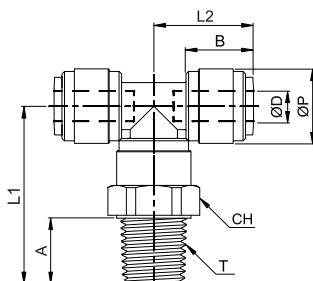
Swivel male elbow BSPP thread



CODE	ØD	T	ØP	A	B	L1	L2	CH	g
HRPL04G01W	4	G 1/8"	13,2	6,0	14,7	28,5	17,9	15,0	6,0
HRPL04G02W		G 1/4"	13,2	8,5	14,7	31,0	17,9	18,0	7,7
HRPL06G01W	6	G 1/8"	15,0	6,0	16,1	30,5	20,1	17,0	7,7
HRPL06G02W		G 1/4"	15,0	8,5	16,1	33,0	20,1	18,0	8,7
HRPL08G01W	8	G 1/8"	17,6	6,0	17,5	31,9	21,9	18,0	10,4
HRPL08G02W		G 1/4"	17,6	8,5	17,5	34,4	21,9	18,0	11,0
HRPL08G03W		G 3/8"	17,6	9,0	17,5	34,9	21,9	22,0	12,8
HRPL10G02W	10	G 1/4"	20,0	8,5	20,1	38,0	25,8	22,0	15,4
HRPL10G03W		G 3/8"	20,0	9,0	20,1	38,5	25,8	22,0	15,8
HRPL10G04W		G 1/2"	20,0	12,5	20,1	42,0	25,8	26,0	19,1
HRPL12G03W	12	G 3/8"	23,0	9,0	24,7	43,7	31,7	26,0	23,2
HRPL12G04W		G 1/2"	23,0	12,5	24,7	47,2	31,7	26,0	25,2

**HRPT-R**

Swivel male tee BSPT thread

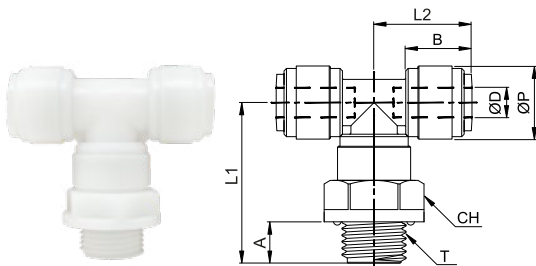


CODE	ØD	T	ØP	A	B	L1	L2	CH	g
HRPT04R01W	4	R 1/8"	13,2	9,1	14,7	29,7	17,9	15,0	7,8
HRPT04R02W		R 1/4"	13,2	13,1	14,7	33,7	17,9	17,0	9,2
HRPT06R01W	6	R 1/8"	15,0	9,1	16,1	31,7	20,1	17,0	9,3
HRPT06R02W		R 1/4"	15,0	13,1	16,1	35,7	20,1	17,0	10,3
HRPT08R01W	8	R 1/8"	17,6	9,1	17,5	33,4	21,9	19,0	13,1
HRPT08R02W		R 1/4"	17,6	13,1	17,5	37,4	21,9	19,0	14,0
HRPT08R03W		R 3/8"	17,6	13,5	17,5	37,8	21,9	19,0	14,6
HRPT10R02W	10	R 1/4"	20,0	13,1	20,1	41,4	25,8	21,0	19,5
HRPT10R03W		R 3/8"	20,0	13,5	20,1	41,8	25,8	21,0	19,6
HRPT10R04W		R 1/2"	20,0	16,5	20,1	44,8	25,8	21,0	23,9
HRPT12R03W	12	R 3/8"	23,0	13,5	24,7	42,8	31,7	24,0	30,2
HRPT12R04W		R 1/2"	23,0	16,5	24,7	51,2	31,7	24,0	32,7



**HRPT-G**

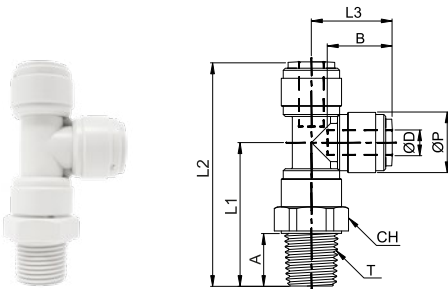
## Swivel male tee BSPP thread



CODE	ØD	T	ØP	A	B	L1	L2	CH	g
HRPT04G01W	4	G 1/8"	13,2	6,0	14,7	28,5	17,9	15	7,9
HRPT04G02W		G 1/4"	13,2	8,5	14,7	31,0	17,9	18	9,6
HRPT06G01W	6	G 1/8"	15,0	6,0	16,1	30,5	20,1	17	10,0
HRPT06G02W		G 1/4"	15,0	8,5	16,1	33,0	20,1	18	11,0
HRPT08G01W	8	G 1/8"	17,6	6,0	17,5	31,9	21,9	18	13,4
HRPT08G02W		G 1/4"	17,6	8,5	17,5	34,4	21,9	18	14,0
HRPT08G03W		G 3/8"	17,6	9,0	17,5	34,9	21,9	22	15,8
HRPT10G02W	10	G 1/4"	20,0	8,5	20,1	38,0	25,8	22	19,8
HRPT10G03W		G 3/8"	20,0	9,0	20,1	38,5	25,8	22	20,2
HRPT10G04W		G 1/2"	20,0	12,5	20,1	42,0	25,8	26	23,5
HRPT12G03W	12	G 3/8"	23,0	9,0	24,7	43,7	31,7	26	30,0
HRPT12G04W		G 1/2"	23,0	12,5	24,7	47,2	31,7	26	32,0

**HRST-R**

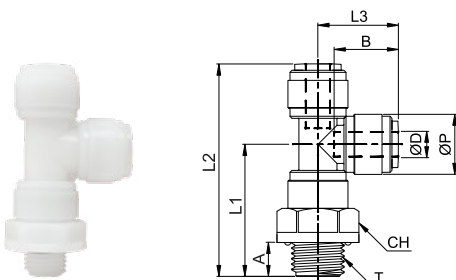
## Swivel male lateral tee BSPT thread



CODE	ØD	T	ØP	A	B	L1	L2	L3	CH	g
HRST04R01W	4	R 1/8"	13,2	9,1	14,7	29,7	47,6	17,9	15	7,8
HRST04R02W		R 1/4"	13,2	13,1	14,7	33,7	51,6	17,9	17	9,2
HRST06R01W	6	R 1/8"	15,0	9,1	16,1	31,7	51,8	20,1	17	9,3
HRST06R02W		R 1/4"	15,0	13,1	16,1	35,7	55,8	20,1	17	10,3
HRST08R01W	8	R 1/8"	17,6	9,1	17,5	33,4	55,3	21,9	19	13,1
HRST08R02W		R 1/4"	17,6	13,1	17,5	37,4	59,3	21,9	19	14,0
HRST08R03W		R 3/8"	17,6	13,5	17,5	37,8	59,7	21,9	19	14,6
HRST10R02W	10	R 1/4"	20,0	13,1	20,1	41,4	67,2	25,8	21	19,5
HRST10R03W		R 3/8"	20,0	13,5	20,1	41,8	67,6	25,8	21	19,6
HRST10R04W		R 1/2"	20,0	16,5	20,1	44,8	70,6	25,8	24	23,9
HRST12R03W	12	R 3/8"	23,0	13,5	24,7	48,2	79,9	31,7	24	30,2
HRST12R04W		R 1/2"	23,0	16,5	24,7	51,2	82,9	31,7	24	32,7

**HRST-G**

## Swivel male lateral tee BSPP thread

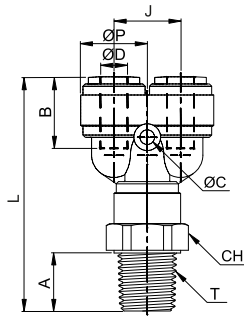


CODE	ØD	T	ØP	A	B	L1	L2	L3	CH	g
HRST04G01W	4	G 1/8"	13,2	6,0	14,7	28,5	46,4	17,9	15,0	7,9
HRST04G02W		G 1/4"	13,2	8,5	14,7	31,0	48,9	17,9	18,0	9,6
HRST06G01W	6	G 1/8"	15,0	6,0	16,1	30,5	50,6	20,1	17,0	10,0
HRST06G02W		G 1/4"	15,0	8,5	16,1	33,0	53,1	20,1	18,0	11,0
HRST08G01W	8	G 1/8"	17,6	6,0	17,5	31,9	53,8	21,9	18,0	13,4
HRST08G02W		G 1/4"	17,6	8,5	17,5	34,4	56,3	21,9	18,0	14,0
HRST08G03W		G 3/8"	17,6	9,0	17,5	34,9	56,8	21,9	22,0	15,8
HRST10G02W	10	G 1/4"	20,0	8,5	20,1	38,0	63,8	25,8	22,0	19,8
HRST10G03W		G 3/8"	20,0	9,0	20,1	38,5	64,3	25,8	22,0	20,2
HRST10G04W		G 1/2"	20,0	12,5	20,1	42,0	67,8	25,8	26,0	23,5
HRST12G03W	12	G 3/8"	23,0	9,0	24,7	43,7	75,4	31,7	26,0	30,0
HRST12G04W		G 1/2"	23,0	12,5	24,7	47,2	78,9	31,7	26,0	32,0



**HRWT-R**

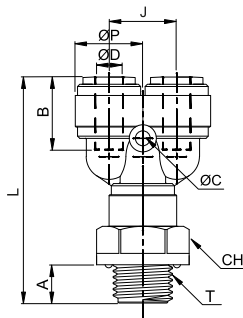
Swivel male Y BSPT thread



CODE	ØD	T	ØP	ØC	A	B	J	L	CH	g
HRWT04R01W	4	R 1/8"	13,8	3,3	9,1	14,7	13,5	45,5	15,0	8,7
HRWT04R02W		R 1/4"	13,8	3,3	13,1	14,7	13,5	49,5	17,0	10,1
HRWT06R01W	6	R 1/8"	15,5	3,3	9,1	16,1	15,5	50,4	17,0	11,6
HRWT06R02W		R 1/4"	15,5	3,3	13,1	16,1	15,5	54,4	17,0	12,5
HRWT08R01W	8	R 1/8"	17,6	4,5	9,1	17,5	17,6	52,5	19,0	14,0
HRWT08R02W		R 1/4"	17,6	4,5	13,1	17,5	17,6	56,5	19,0	14,9
HRWT08R03W		R 3/8"	17,6	4,5	13,5	17,5	17,6	56,9	19,0	15,5
HRWT10R02W	10	R 1/4"	20,0	4,5	13,1	20,1	20,0	61,8	21,0	20,9
HRWT10R03W		R 3/8"	20,0	4,5	13,5	20,1	20,0	62,2	21,0	21,0
HRWT10R04W		R 1/2"	20,0	4,5	16,5	20,1	20,0	65,2	24,0	25,3
HRWT12R03W	12	R 3/8"	23,0	4,5	13,5	24,7	23,0	72,9	24,0	33,3
HRWT12R04W		R 1/2"	23,0	4,5	16,5	24,7	23,0	75,9	24,0	35,8

**HRWT-G**

Swivel male Y BSPP thread

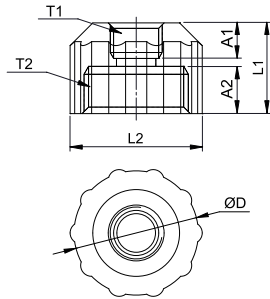


CODE	ØD	T	ØP	ØC	A	B	J	L	CH	g
HRWT04G01W	4	G 1/8"	13,8	3,3	6,0	14,7	13,5	44,3	15,0	8,8
HRWT04G02W		G 1/4"	13,8	3,3	8,5	14,7	13,5	46,8	18,0	10,5
HRWT06G01W	6	G 1/8"	15,5	3,3	6,0	16,1	15,5	49,2	17,0	11,9
HRWT06G02W		G 1/4"	15,5	3,3	8,5	16,1	15,5	51,7	18,0	12,9
HRWT08G01W	8	G 1/8"	17,6	4,5	6,0	17,5	17,6	51,0	18,0	13,9
HRWT08G02W		G 1/4"	17,6	4,5	8,5	17,5	17,6	53,5	18,0	15,1
HRWT08G03W		G 3/8"	17,6	4,5	9,0	17,5	17,6	54,0	22,0	16,8
HRWT10G02W	10	G 1/4"	20,0	4,5	8,5	20,1	20,0	58,4	22,0	21,2
HRWT10G03W		G 3/8"	20,0	4,5	9,0	20,1	20,0	58,9	22,0	21,6
HRWT10G04W		G 1/2"	20,0	4,5	12,5	20,1	20,0	62,4	26,0	24,9
HRWT12G03W	12	G 3/8"	23,0	4,5	9,0	24,7	23,0	68,4	26,0	33,1
HRWT12G04W		G 1/2"	23,0	4,5	12,5	24,7	23,0	71,9	26,0	35,1



**HUFF**

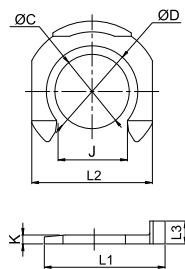
## Threaded reducer BSPP with internal flat seal



CODE	T1	T2	ØD	A1	A2	L1	L2	g
HUFFG02-G06G	G 1/4"	G 3/4"	31,5	9,5	12,0	23,0	33,5	15,6
HUFFG03-G06G	G 3/8"	G 3/4"	31,5	9,5	12,0	23,0	33,5	14,5

**HCP**

## Locking clip



CODE	ØD	ØC	J	K	L1	L2	L3	g
HCP04-5/32	04 - 5/32	6,2	4,3	1,1	11,0	10,2	2,8	0,09
HCP05-3/16	05 - 3/16	6,2	4,3	1,1	11,0	10,2	2,8	0,09
HCP06-1/4	06 - 1/4	8,0	6,4	1,3	11,6	11,6	3,1	0,12
HCP08-5/16	08 - 5/16	9,6	7,3	1,4	13,9	13,5	3,3	0,16
HCP10-3/8	10 - 3/8	11,8	9,2	1,4	16,4	16,0	3,4	0,23
HCP12-1/2	12 - 1/2	14,4	11,1	1,4	19,0	19,0	3,6	0,30

ØD	BLACK	GREY	RED	BLUE
04 - 5/32	HCP04-5/32BK	HCP04-5/32GR	HCP04-5/32RD	HCP04-5/32BL
05 - 3/16	HCP05-3/16BK	HCP05-3/16GR	HCP05-3/16RD	HCP05-3/16BL
06 - 1/4	HCP06-1/4BK	HCP06-1/4GR	HCP06-1/4RD	HCP06-1/4BL
08 - 5/16	HCP08-5/16BK	HCP08-5/16GR	HCP08-5/16RD	HCP08-5/16BL
10 - 3/8	HCP10-3/8BK	HCP10-3/8GR	HCP10-3/8RD	HCP10-3/8BL
12 - 1/2	HCP12-1/2BK	HCP12-1/2GR	HCP12-1/2RD	HCP12-1/2BL

