

# SINTESI DC

## ROTARY ACTUATOR FOR BALL VALVES WITH DIRECT CURRENT SUPPLY

### USE

- zone heating / cooling systems
- HVAC
- drinking water systems
- systems using alternative energy
- thermal solar systems, with suitable ball valve
- household automation systems

### KEY FEATURES

- 12V and 24V direct current supply
- ON/OFF 2-point or 3-point electrical control
- electrical control (0° - 45° - 90°) for 6-way valves
- open and close feedback signal
- fast push connection with the SINTESI ball valve range
- manual operation



TECHNICAL FEATURES	SINTESI DC
Power supply	12V DC • 24V DC ± 10%
Power consumption during operation	2 W
Power consumption during standby	0,3 W
Feeder cable	Length 80 cm
Nominal torque	5 Nm
Maximum torque	8 Nm
Command	2-point and 3-point ON/OFF • 0° - 45° - 90°
Position feedback	Opening, closing or intermediate position
Maximum feedback current	50mA (resistive load)
Operating angle	95°
Operating time (90°)	24V: 30 sec • 60 sec • 120 sec   12V: 60 sec • 120 sec
Maximum noise (at 1 m distance)	40 dB(A)
Position indicator	Rotating arrow
Installation	Indoor, protected from frost *
Operational room temperature	+5°C ...+50°C
Ambient humidity	max 95% RH, no condensation
Protection degree	IP54
Insulation degree	III
Outlet shell material	Polyamide PA 6, 30% fiberglass
Maintenance	None
Certification	CE

\* the actuator must be installed indoors and far from the direct sunlight

**Notes and Warnings:** The device is designed to be used in heating systems, cooling systems, ventilation systems and - in general - in civil installations with features corresponding to the above-mentioned specifications. It can not be used outside the intended application field.

### VERSIONS

Command	Operating time	Code
2 / 3 POINTS 12V DC	60 sec 120 sec	SDC52T060 SDC52T120
0° - 45° - 90° 12V DC	60 sec 120 sec	SDC53T060 SDC53T120

Command	Operating time	Code
2 / 3 POINTS 24V DC	30 sec 60 sec 120 sec	SDC42T030 SDC42T060 SDC42T120
0° - 45° - 90° 24V DC	30 sec 60 sec 120 sec	SDC43T030 SDC43T060 SDC43T120



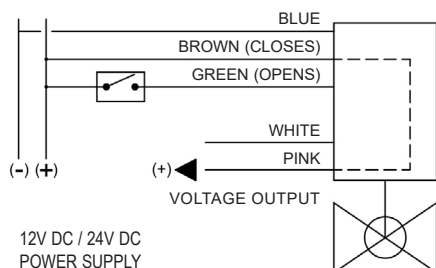
# SINTESI DC

## ROTARY ACTUATOR FOR BALL VALVES WITH DIRECT CURRENT SUPPLY

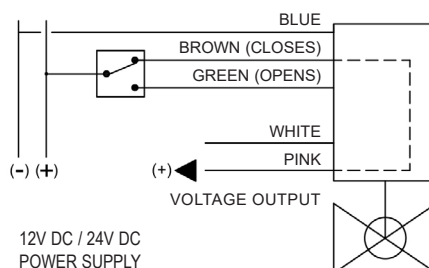
### ELECTRICAL CONNECTIONS

#### 2-POINT / 3-POINT VERSION

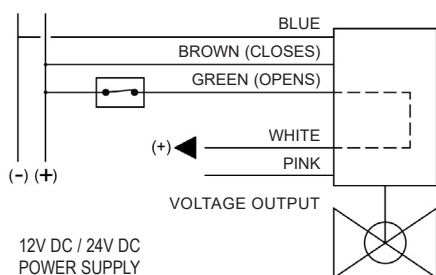
##### 2-POINT - CLOSING POSITION (0°)



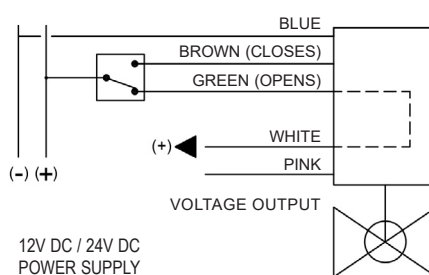
##### 3-POINT - CLOSING POSITION (0°)



##### 2-POINT - OPENING POSITION (90°)



##### 3-POINT - OPENING POSITION (90°)



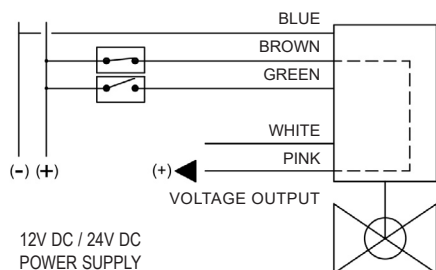
**CLOSING  
POSITION (0°)**



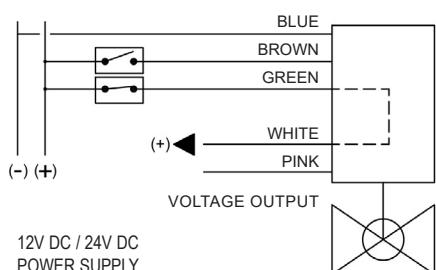
**OPENING  
POSITION (90°)**

#### 0° - 45° - 90° VERSION

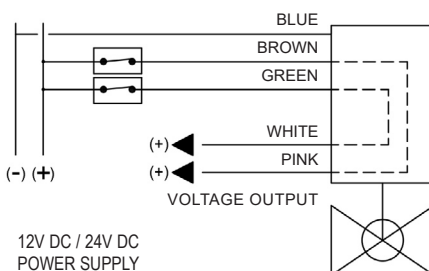
##### CLOSING POSITION (0°)



##### OPENING POSITION (90°)



##### INTERMEDIATE POSITION (45°)



**INTERMEDIATE  
POSITION (45°)**

**NOTES** • The connection of the power cable should be made inside a branch box with at least an IP54 protection.



COMPARATO NELLO s.r.l.

UNI EN ISO 9001:2015 CERTIFIED COMPANY

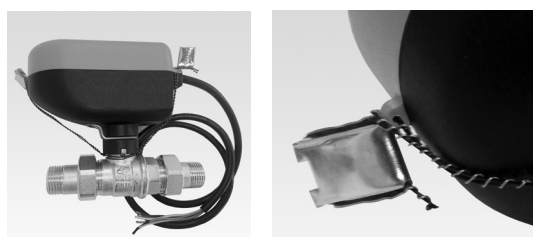
# SINTESI DC

ROTARY ACTUATOR FOR BALL VALVES WITH DIRECT CURRENT SUPPLY

## COUPLING SEQUENCE TO BALL VALVES WITH FAST PUSH CONNECTION



## MOTORISED VALVE SEALING WITH LEAD

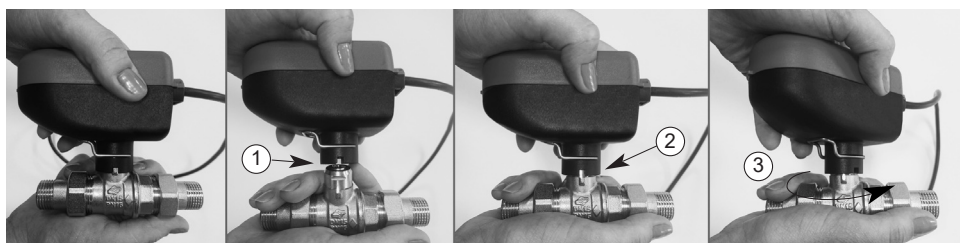


By means of special seals (not included), it is possible to seal the motorised valve with lead, in order to prevent the actuator to be removed from the ball valve.

## MANUAL OPERATION

In case of need, it is possible to open/close the ball valve manually, as follows:

1. Release the actuator from the ball valve;
2. Insert the actuator in the body of the valve, without pressing it;
3. Proceed with the desired manual activation, using the actuator as a knob.



comparato.com



COMPARATO NELLO s.r.l.

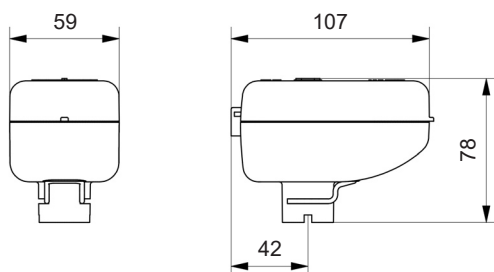
UNI EN ISO 9001:2015 CERTIFIED COMPANY

# SINTESI DC

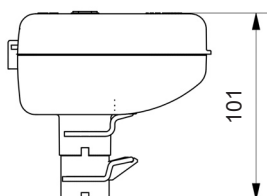
ROTARY ACTUATOR FOR BALL VALVES WITH DIRECT CURRENT SUPPLY

## OVERALL SIZE

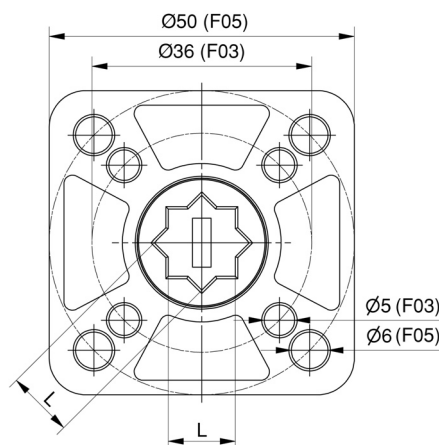
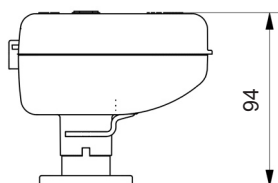
### ACTUATOR



### SPACER • cod. DISN04



### ISO 5211 CONNECTION KIT • cod. AIST01



ISO Connection	L
F03	9
F05	11

## EXAMPLE OF SPECIFICATIONS

**SINTESI DC actuator** with 2-point and 3-point ON/OFF electric control, voltage feedback in open and close position, nominal torque: 5 Nm, power supply: 12V DC, operating time: 60 sec / 90°, operating angle: 90°, degree of protection: IP54, for ball valve: 2-way / 3-way / 6-way / by-pass, connection to the ball valve via Sintesi fast push connection.

Brand: **COMPARATO**  
Code: **SDC52T060**

UPDATED DATA SHEETS AVAILABLE AT [www.comparato.com](http://www.comparato.com)

In order to provide an up-to-date service, Comparato Nello S.r.l. reserves the right to modify technical data, drawings, graphs and photos of this data sheet at any time, without prior notice.



**HYDROTHERMAL SYSTEMS**  
**COMPARATO NELLO s.r.l.**

17014 CAIRO MONTENOTTE (SV) ITALIA VIALE DELLA LIBERTÀ • LOCALITÀ FERRANIA • Tel. +39 019 510.371 - FAX +39 019 517.102

[www.comparato.com](http://www.comparato.com)

e-mail: [info@comparato.com](mailto:info@comparato.com)

UNI EN ISO 9001:2015 CERTIFIED COMPANY

**BIM**  
BUILDING  
INFORMATION  
MODELING