




 0°C ÷ 60°C

 Working pressure:
10 Bar
Negative pressure:
-750 mmHg

 Compressed air

 Polyamide, Polyurethane

 **Body:** nickel plated brass
Lock claw: AISI 301 stainless steel
Seal: NBR
Collet: POM

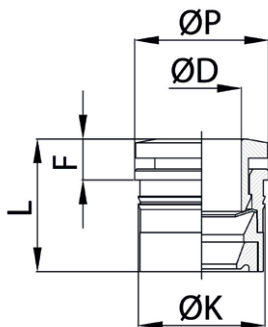
 **REACH**
Products in compliance with
the directive 2002/95/EC

RoHS2

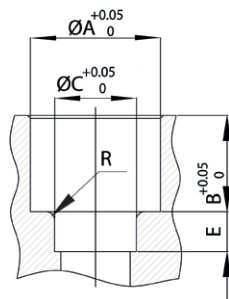
Products in compliance with
the directive 2011/65/EU

CAS

Cartridge



CODE	ØD	ØK	ØP	F	L	GR.
CAS04	4	9,0	10,0	3,55	11,25	1,0
CAS06	6	11,15	12,0	3,95	12,45	3,0
CAS08	8	13,25	14,0	4,30	13,90	4,0
CAS10	10	15,50	16,0	4,85	15,15	5,0
CAS12	12	17,80	19,0	5,0	17,40	7,0



CODE	ØA	ØC	B	E	R
CAS04	8,8	4,25	7,80	3,0	0,8
CAS06	10,9	6,25	8,60	3,5	0,8
CAS08	13,0	8,25	9,70	4,0	0,8
CAS10	15,2	10,25	10,45	4,5	1,0
CAS12	17,5	12,25	12,50	5,0	1,0

