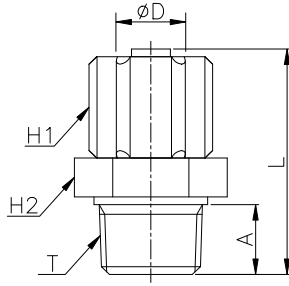


**CK**

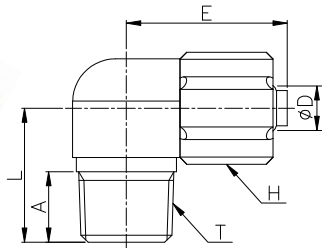
Male connector BSPT thread



CODE	ØD	T	L	A	H1	H2	GR.
CK04R01	4/2,5	R1/8"	24,5	8,0	10	12	2,0
CK06R01	6/4	R1/8"	28,5	7,0	12	13	3,0
CK06R02	6/4	R1/4"	30,5	9,0	12	15	4,0
CK08R01	8/5,5	R1/8"	30,0	9,0	14	14	5,0
CK08R02	8/5,5	R1/4"	29,0	9,0	14	17	5,0
CK08R03	8/5,5	R3/8"	31,7	10,2	14	19	6,0
CK10R02	10/6,5	R1/4"	33,4	9,2	17	17	7,0
CK10R03	10/6,5	R3/8"	34,9	10,2	17	19	7,0
CK12R02	12/8	R1/4"	39,0	9,2	19	17	9,0
CK12R03	12/8	R3/8"	41,2	10,2	19	19	9,0
CK12R04	12/8	R1/2"	45,0	15,0	19	22	13,0

**GCK**

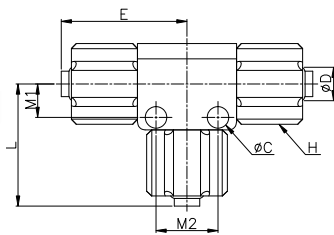
Male elbow BSPT thread



CODE	ØD	T	L	E	A	H	GR.
GCK04R01	4/2,5	R1/8"	16,5	16,0	8,0	12	3,0
GCK06R01	6/4	R1/8"	18,0	21,5	8,5	12	5,0
GCK06R02	6/4	R1/4"	18,7	23,5	9,0	12	7,0
GCK08R01	8/5,5	R1/8"	17,0	21,0	8,0	14	6,0
GCK08R02	8/5,5	R1/4"	19,0	22,5	10,0	14	8,0
GCK08R03	8/5,5	R3/8"	20,5	23,8	10,2	14	10,0
GCK10R02	10/6,5	R1/4"	22,0	24,1	12,0	17	10,0
GCK10R03	10/6,5	R3/8"	23,0	27,1	12,0	17	12,0
GCK12R02	12/8	R1/4"	23,0	32,2	11,0	19	14,0
GCK12R03	12/8	R3/8"	25,0	32,2	12,0	19	16,0
GCK12R04	12/8	R1/2"	28,0	34,0	15,0	19	19,0

**FCK**

Union Tee



CODE	ØD	L	E	ØC	M1	M2	H	GR.
FCK0400	4/2,5	19,0	18,0	2,5	5,7	9,5	10	4,0
FCK0600	6/4	24,3	24,2	4,3	5,7	11,2	12	11,0
FCK0800	8/5,5	24,1	24,8	4,3	6,6	12,2	14	14,0
FCK1000	10/6,5	30,0	27,0	4,3	8,3	13,4	17	24,0
FCK1200	12/8	36,9	34,0	4,3	9,3	13,7	19	26,0

