



 -40°C ÷ +140°C
0°C ÷ +140°C for swivel fittings

 Up to 25 Bar at 20°C.
Up to 16 Bar at 20°C for swivel

 Compressed air, potable water and food fluids suitable with construction materials

 Taper gas BSPT ISO 7 from R1/8" to R1/2"
Parallel gas BSPP ISO 228 from G1/8" to G1/2"

 Polyethylene, PTFE, FEP

 **Body:** Stainless steel AISI 316L
Lock nut: Stainless steel AISI 316L
O'ring for swivel fittings: FKM (viton)

FEATURES

The fittings of this range, made completely in AISI 316L, are suitable also for food contact and chimica applications

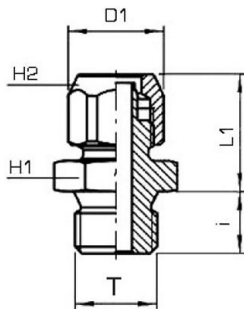
 **REACH** Products in compliance with the directive 2002/95/EC

RoHS2 Products in compliance with the directive 2011/65/EU



2700

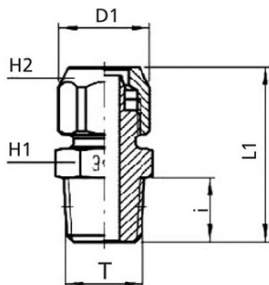
Male connector BSPP thread



CODE	T	ØD	I	L1	D1	H1	H2	GR.
2700TR1864	G1/8"	6/4	8	18,5	13,0	13	12	15,0
2700TR1464	G1/4"	6/4	10	19,0	13,0	17	12	24,0
2700TR1886	G1/8"	8/6	8	18,5	15,5	13	14	18,0
2700TR1486	G1/4"	8/6	10	19,0	15,5	17	14	27,0
2700TR18108	G1/8"	10/8	8	20,0	18,5	14	17	28,0
2700TR14108	G1/4"	10/8	10	20,5	18,5	17	17	32,0
2700TR38108	G3/8"	10/8	10	20,5	18,5	19	17	40,0
2700TR381210	G3/8"	12/10	10	22,0	21,0	19	19	34,0
2700TR121210	G1/2"	12/10	12	22,5	21,0	24	19	34,0

2710

Male connector BSPT thread



CODE	T	ØD	I	L1	D1	H1	H2	GR.
2710TR1864	R1/8"	6/4	7,5	26,0	13,0	12	12	14,0
2710TR1464	R1/4"	6/4	11,0	30,0	13,0	14	12	21,0
2710TR1886	R1/8"	8/6	7,5	26,0	15,5	12	14	17,0
2710TR1486	R1/4"	8/6	11,0	30,0	15,5	14	14	24,0
2710TR18108	R1/8"	10/8	7,5	27,5	18,5	14	17	28,0
2710TR14108	R1/4"	10/8	11,0	31,5	18,5	14	17	30,0
2710TR38108	R3/8"	10/8	11,5	32,0	18,5	17	17	40,0
2710TR381210	R3/8"	12/10	11,5	33,5	21,0	17	19	34,0
2710TR121210	R1/2"	12/10	14,0	36,5	21,0	22	19	34,0

