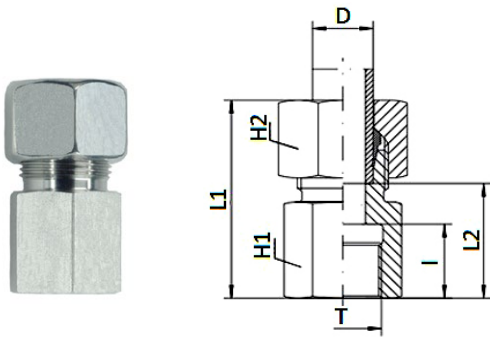


3730

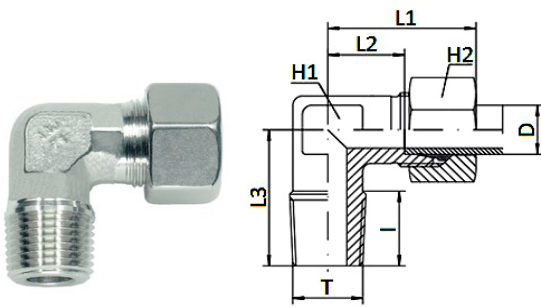
Female connector BSPP thread



CODE	T	ØD	L1	L2	I	H1	H2	BAR	GR.
3730TRL186	G1/8"	6	36,0	19,0	12,0	14	14	315	29,0
3730TRS146	G1/4"	6	42,0	26,0	17,0	19	17	630	37,0
3730TRL148	G1/4"	8	41,0	24,0	17,0	19	17	315	55,0
3730TRL388	G3/8"	8	42,0	25,0	17,0	24	17	315	77,0
3730TRL128	G1/2"	8	46,0	32,0	20,0	27	17	315	96,0
3730TRL1410	G1/4"	10	42,0	25,0	17,0	19	19	315	60,0
3730TRL3810	G3/8"	10	43,0	26,0	17,0	24	19	315	83,0
3730TRL1210	G1/2"	10	47,0	30,0	20,0	27	19	315	100,0
3730TRL3812	G3/8"	12	43,0	26,0	17,0	24	22	315	91,0
3730TRL1212	G1/2"	12	48,0	30,0	20,0	27	22	315	106,0
3730TRL1215	G1/2"	15	49,0	31,0	20,0	27	27	315	131,0
3730TRS1216	G1/2"	16	53,0	31,5	20,0	27	30	400	149,0

3740

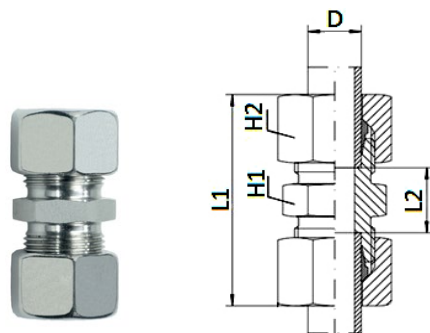
Male elbow BSPT thread



CODE	T	ØD	L1	L2	L3	I	H1	H2	BAR	GR.
3740TRLL184	R1/8"	4	21,0	11,0	17,0	8,0	9,0	10,0	100	35,0
3740TRL186	R1/8"	6	27,0	12,0	20,0	8,0	12,0	14,0	315	40,0
3740TRS146	R1/4"	6	31,0	16,5	26,0	12,0	12,0	17,0	630	46,0
3740TRLL188	R1/8"	8	23,0	11,5	20,0	8,0	12,0	14,0	100	48,0
3740TRL148	R1/4"	8	29,0	14,0	26,0	12,0	12,0	17,0	315	63,0
3740TRL1410	R1/4"	10	30,0	15,0	27,0	12,0	14,0	19,0	315	81,0
3740TRS3810	R3/8"	10	34,0	17,5	28,0	12,0	17,0	22,0	630	115,0
3740TRL3812	R3/8"	12	32,0	17,5	28,0	12,0	17,0	22,0	315	133,0
3740TRL1215	R1/2"	15	36,0	21,0	34,0	14,0	19,0	27,0	315	139,0
3740TRS1216	R1/2"	16	43,0	24,5	32,0	14,0	24,0	30,0	400	145,0

3780

Union connector



CODE	ØD	L1	L2	H1	H2	BAR	GR.
3780TRLL4	4	35,0	12,0	9,0	10,0	100	28,0
3780TRL6	6	44,0	10,0	12,0	14,0	500	34,0
3780TRL8	8	45,0	11,0	14,0	17,0	500	49,0
3780TRL10	10	48,0	13,0	17,0	19,0	500	62,0
3780TRL12	12	49,0	14,0	19,0	22,0	400	83,0
3780TRL15	15	54,0	16,0	24,0	27,0	400	137,0
3780TRS16	16	65,0	21,0	27,0	30,0	630	151,0

